

## DSE 5210 V3 One Link Install

### Parts list:

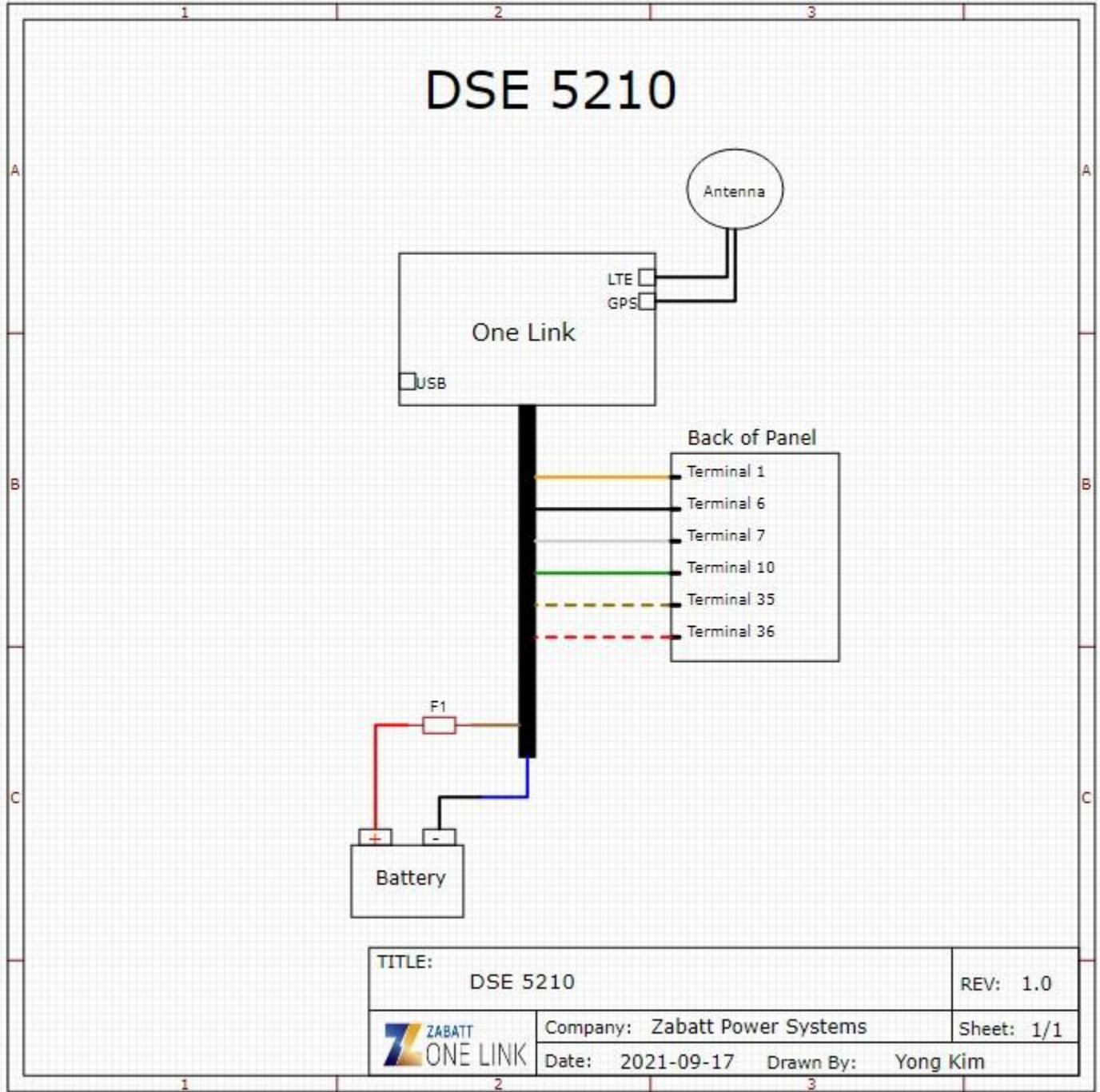
- |                                   |   |
|-----------------------------------|---|
| (1) One Link with magnetic mounts | (1) Battery wiring harness with inline fuse |
| (1) 4G LTE Antenna/GPS Antenna    | (1) OLSC005 serial cable                    |
| (2) Lever wire connectors         | (2) Zip ties                                |

### Installation Instructions:

1. Put the generator in stop mode.
2. Disconnect the positive battery terminal. (**Do not reconnect the positive battery terminal until step 14.**)
3. Using the magnetic mounts, mount the One Link inside of the generator enclosure close to the controller. (**Be sure the mounting location is away from weather exposure.**)
4. Connect the ring connector on the bare **red** wire of the battery wiring harness to the positive (+) battery terminal.
5. Connect the ring connector on the bare **black** wire of the battery wiring harness to the negative (-) battery terminal.
6. Route the **brown** wire and **blue** wire from the One Link I/O cable to the battery wiring harness installed in steps 4 and 5.
7. Using one of the included lever wire connectors, connect the bare **black** wire from the battery wiring harness to the **blue** wire from the One Link I/O cable.
8. Using one of the included lever wire connectors, connect the bare **red** wire from the battery wiring harness to the **brown** wire from the One Link I/O cable.
9. Route the following wires from the One Link I/O cable to the back of the panel:
  - a. The **orange** wire to terminal 1.
  - b. The **black** wire to terminal 6.
  - c. The white wire to terminal 7.
  - d. The **green** wire to terminal 10.
  - e. The **brown** wire with white stripe to terminal 35.
  - f. The **red** wire with white stripe to terminal 36.
10. Mount the LTE/GPS antenna on the top of the generator.
11. Connect the LTE antenna cable to the top connector on the right side of the One Link.
12. Connect the GPS antenna cable to the bottom connector on the right side of the One Link.

13. Plug the 15 pin connector into the bottom of the One Link, and tighten both screws using a flathead screwdriver.
14. Reconnect the positive battery terminal to the battery.

At this time the One Link will power up and begin communicating with the generator. Please allow 5-10 minutes for the One Link to establish a connection to the internet. Check the activation screen or your One Link account to ensure the generator's vitals update, and the One Link is transmitting data.



DSE 5210 V3 Wiring Legend					
		Old Gray I/O Cable	New Black I/O Cable	Generator	
Description	One Link Function	Color	Color	Location	Generator Function
Battery +	Battery +	Red	Brown	Battery +	Battery +
Battery -	Battery -	Black	Blue	Battery -	Battery -
K1COM	K1COM	Red/White Stripe	Orange	Terminal 1	Remote Start
K1NO	K1NO	Red/Black Stripe	Green	Terminal 10	
K2COM	K2COM	Orange	Yellow		
K2NC	K2NC	Orange/Black Stripe	Gray		
D11	Close to Ground	Black/White Stripe	Pink		
D12	Close to Ground	Blue/Black Stripe	Red		
D13	Close to Batt +	Blue/White Stripe	Black	Terminal 6	Common Alarm
D14	Close to Batt +	Blue	White	Terminal 7	Low Coolant Level
D15	Close to Batt +	Green/Black Stripe	Purple		
A1	0-5V	Green	Light Green		
A2	0-5V	Green/White Stripe	Black/White Stripe		
L1	AC Voltage L1	White	Brown/White Stripe	Terminal 35	AC Voltage Sensing(Includes Hz and RPM)
L2	AC Voltage L2	White/Black Stripe	Red/White Stripe	Terminal 36	