

Generic Digital V3 One Link Install

Parts list:

- | | |
|-----------------------------------|---|
| (1) One Link with magnetic mounts | (1) Battery wiring harness with inline fuse |
| (1) 4G LTE Antenna/GPS Antenna | (1) OLSC005 serial cable |
| (2) Lever wire connectors | (2) Zip ties |

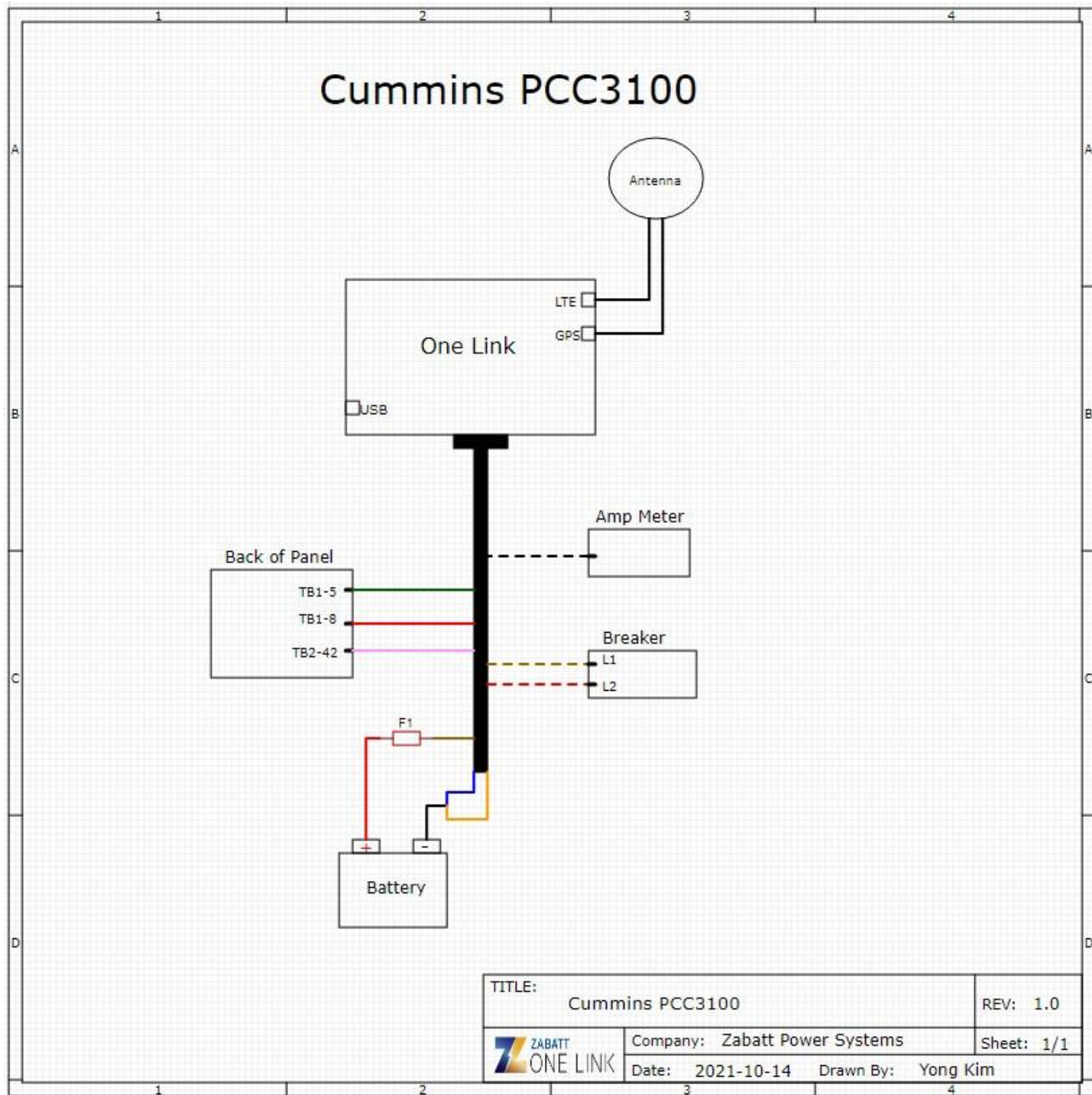
Installation Instructions:

1. Put the generator in stop mode.
2. Disconnect the positive battery terminal. (**Do not reconnect the positive battery terminal until step 19.**)
3. Using the magnetic mounts, mount the One Link inside of the generator enclosure close to the controller. (**Be sure the mounting location is away from weather exposure.**)
4. Connect the ring connector on the **red** wire of the battery wiring harness to the positive (+) battery terminal.
5. Connect the ring connector on the **black** wire of the battery wiring harness to the negative (-) battery terminal.
6. Route the **brown** wire, **orange**, and **blue** wire from the One Link I/O cable to the battery wiring harness installed in steps 4 and 5.
7. Using one of the included lever wire connectors, connect the bare **black** wire from the battery wiring harness to the **orange** wire and **blue** wire from the One Link I/O cable.
8. Using one of the included lever wire connectors, connect the bare **red** wire from the battery wiring harness to the **brown** wire from the One Link I/O cable.
9. Route the **green** wire from the One Link I/O cable to TB1-5 on the back of the panel.
10. Route the **red** wire from the One Link I/O cable to TB1-8 on the back of the panel.
11. Route the **pink** wire from the One Link I/O cable to TB2-42 on the back of the panel.
12. Route the **black** wire with white stripe to the back of the amp meter.
13. Route the **brown** wire with white stripe to L1 to the breaker.
14. Route the **red** wire with white stripe to L2 to the breaker.
15. Mount the LTE/GPS antenna on the top of the generator.
16. Connect the LTE antenna cable to the top connector on the right side of the One Link.
17. Connect the GPS antenna cable to the bottom connector on the right side of the One Link.

18. Plug the 15 pin connector into the bottom of the One Link, and tighten both screws using a flathead screwdriver.

19. Reconnect the positive battery terminal to the battery.

At this time the One Link will power up and begin communicating with the generator. Please allow 5-10 minutes for the One Link to establish a connection to the internet. Check the activation screen or your One Link account to ensure the generator's vitals update, and the One Link is transmitting data.



Cummins PCC3100 V3 Wiring Legend

One Link	Old Gray I/O Cable	New Black I/O Cable	Generator	
Description	Color	Color	Location	Generator Function
Battery +	Red	Brown	Battery +	Battery +
Battery -	Black	Blue	Battery -	Battery -
K1COM	Red/White Stripe	Orange	Battery -	Remote Start
K1NO	Red/Black Stripe	Green	TB1 - 5	
K2COM	Orange	Yellow		
K2NC	Orange/Black Stripe	Gray		
DI1	Black/White Stripe	Pink	TB2 - 42	Not in Auto
DI2	Blue/Black Stripe	Red	TB1 - 8	Common Alarm(41 needs to go to Batt -)
DI3	Blue/White Stripe	Black		
DI4	Blue	White		
DI5	Green/Black Stripe	Purple		
A1	Green	Light Green		
A2	Green/White Stripe	Black/White Stripe	Back of Amps Meter?	Amps Sensing
L1	White	Brown/White Stripe	Breaker L1	AC Voltage Sensing(Includes Hz and RPM)
L2	White/Black Stripe	Red/White Stripe	Breaker L2	