

EMCP 4.2 V3 One Link Install

Parts list:

- | | |
|-----------------------------------|---|
| (1) One Link with magnetic mounts | (1) Battery wiring harness with inline fuse |
| (1) 4G LTE Antenna/GPS Antenna | (1) OLSC005 serial cable |
| (1) OLSC006 serial cable | (2) Lever wire connectors |
| (2) Zip ties | |

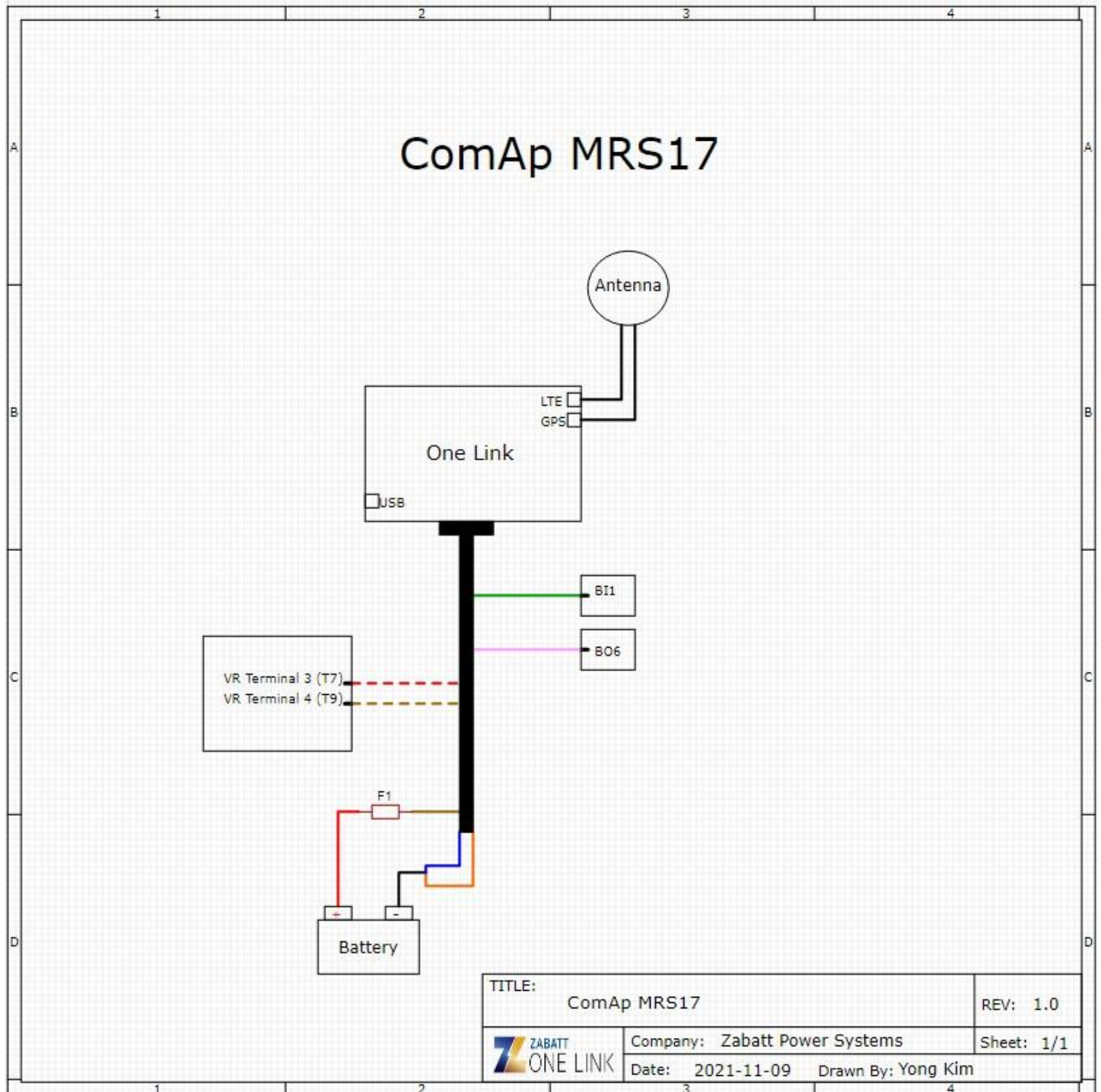
Installation Instructions:

1. Put the generator in stop mode.
2. Disconnect the positive battery terminal. **(Do not reconnect the positive battery terminal until step 17.)**
3. Using the magnetic mounts, mount the One Link inside of the generator enclosure close to the controller. **(Be sure the mounting location is away from weather exposure.)**
4. Connect the ring connector on the **red** wire of the battery wiring harness to the positive (+) battery terminal.
5. Connect the ring connector on the **black** wire of the battery wiring harness to the negative (-) battery terminal.
6. Route the **brown** wire, **orange** wire, and **blue** wire from the One Link I/O cable to the battery wiring harness installed in steps 4 and 5.
7. Using one of the included lever wire connectors, connect the bare **black** wire from the battery wiring harness to the **orange** wire and **blue** wire from the One Link I/O cable.
8. Using one of the included lever wire connectors, connect the bare **red** wire from the battery wiring harness to the **brown** wire from the One Link I/O cable.
9. Route the **green** wire from the One Link I/O cable to B11 behind the panel.
10. Route the **pink** wire from the One Link I/O cable to BO6 behind the panel.
11. Route the **brown** wire with white stripe to VR Terminal 3 (T7) behind the panel.
12. Route the **red** wire with white stripe to VR Terminal 4 (T9) behind the panel.
13. Mount the LTE/GPS antenna on the top of the generator.
14. Connect the LTE antenna cable to the top connector on the right side of the One Link.
15. Connect the GPS antenna cable to the bottom connector on the right side of the One Link.
16. Plug the 15 pin connector into the bottom of the One Link, and tighten both screws using a flathead screwdriver.
17. Reconnect the positive battery terminal to the battery.



4612 Highway Ave
Jacksonville, FL 32259
(888) 366-7886

At this time the One Link will power up and begin communicating with the generator. Please allow 5-10 minutes for the One Link to establish a connection to the internet, and then check the activation screen or your One Link account to ensure the generator's vitals update and the One Link is transmitting data.



ComAp V3 Wiring Diagram

Old Gray I/O Cable		New Black I/O Cable	Generator	
One Link Function	Color	Color	Location	Generator Function
Battery +	Red	Brown	Battery +	Battery +
Battery -	Black	Blue	Battery -	Battery -
K1COM	Red/White Stripe	Orange	Battery -	Remote Start
K1NO	Red/Black Stripe	Green	BI1	
K2COM	Orange	Yellow		
K2NC	Orange/Black Stripe	Gray		
Close to Ground	Black/White Stripe	Pink	BO6	Common Warning
Close to Ground	Blue/Black Stripe	Red		
Close to Batt +	Blue/White Stripe	Black		
Close to Batt +	Blue	White		
Close to Batt +	Green/Black Stripe	Purple		
0-5V	Green	Light Green		
0-5V	Green/White Stripe	Black/White Stripe		
AC Voltage L1	White	Brown/White Stripe	VR Terminal 3 (T7)	AC Voltage Sensing(Includes Hz and RPM)
AC Voltage L2	White/Black Stripe	Red/White Stripe	VR Terminal 4 (T9)	