

CAT EMCP II V3 One Link Install

Parts list:

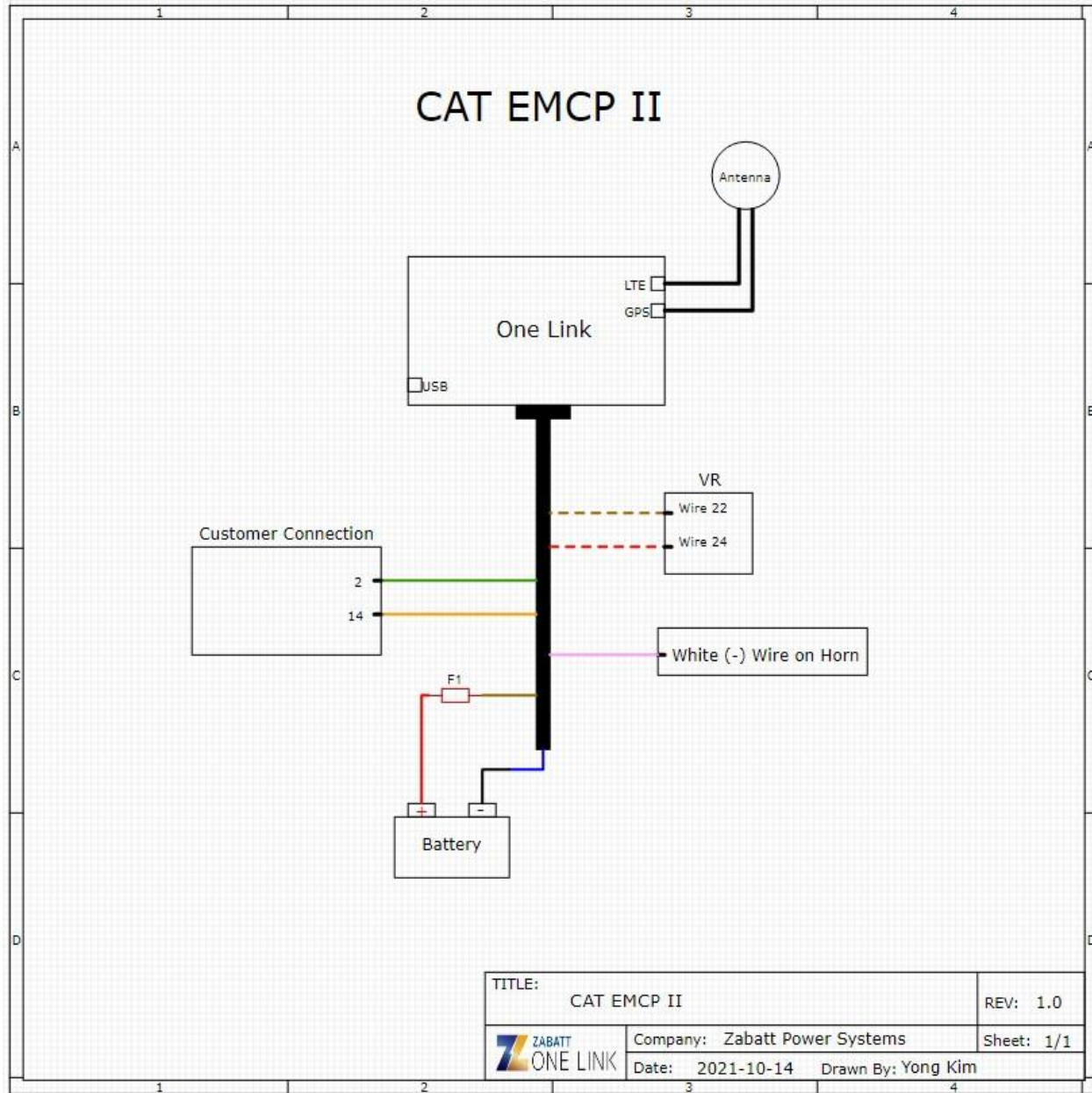
- | | |
|-----------------------------------|---|
| (1) One Link with magnetic mounts | (1) Battery wiring harness with inline fuse |
| (1) 4G LTE Antenna/GPS Antenna | (1) OLSC005 serial cable |
| (2) Lever wire connectors | (2) Zip ties |

Installation Instructions:

1. Put the generator in stop mode.
2. Disconnect the positive battery terminal. (**Do not reconnect the positive battery terminal until step 18.**)
3. Using the magnetic mounts, mount the One Link inside of the generator enclosure close to the controller. (**Be sure the mounting location is away from weather exposure.**)
4. Connect the ring connector on the **red** wire of the battery wiring harness to the positive (+) battery terminal.
5. Connect the ring connector on the **black** wire of the battery wiring harness to the negative (-) battery terminal.
6. Route the **brown** wire and **blue** wire from the One Link I/O cable to the battery wiring harness installed in steps 4 and 5.
7. Using one of the included lever wire connectors, connect the bare **black** wire from the battery wiring harness to the bare **blue** wire from the One Link I/O cable.
8. Using one of the included lever wire connectors, connect the bare **red** wire from the battery wiring harness to the bare **brown** wire from the One Link I/O cable.
9. Route the bare **green** wire from the One Link I/O cable to pin 2 on the customer connection panel.
10. Route the bare **orange** wire from the One Link I/O cable to pin 14 on the customer connection panel.
11. Route the bare **pink** wire from the One Link I/O cable to the white wire on the horn.
12. Route the bare **brown** wire with white stripe from the One Link I/O cable to wire 22 on the Voltage Regulator (VR).
13. Route the bare **red** wire with the white stripe from the One Link I/O cable to wire 24 on the Voltage Regulator (VR).
14. Mount the LTE/GPS antenna on the top of the generator.
15. Connect the LTE antenna cable to the top connector on the right side of the One Link.
16. Connect the GPS antenna cable to the bottom connector on the right side of the One Link.

17. Plug the 15 pin connector into the bottom of the One Link, and tighten both screws using a flathead screwdriver.
18. Reconnect the positive battery terminal to the battery.

At this time the One Link will power up and begin communicating with the generator. Please allow 5-10 minutes for the One Link to establish a connection to the internet. Check the activation screen or your One Link account to ensure the generator's vitals update, and the One Link is transmitting data.



CAT EMCPII Wire Legend

		Old Gray I/O Cable	New Black I/O Cable	Generator	
Description	One Link Function	Color	Color	Location	Generator Function
Battery +	Battery +	Red	Brown	Battery +	Battery +
Battery -	Battery -	Black	Blue	Battery -	Battery -
K1COM	K1COM	Red(White Stripe)	Orange	14 in customer connection	Remote Start Dry Contacts
K1NO	K1NO	Red(Black Stripe)	Green	2 in customer connection	
K2COM	K2COM	Orange	Yellow		
K2NC	K2NC	Orange(Black Stripe)	Gray		
DI1	Close to Ground	Black(White Stripe)	Pink	White (-) Wire on Horn	Common Alarm
DI2	Close to Ground	Blue(Black Stripe)	Red		
DI3	Close to Batt +	Blue(White Stripe)	Black		
DI4	Close to Batt +	Blue	White		
DI5	Close to Batt +	Green(Black Stripe)	Purple		
A1	0-5V	Green	Light Green		
A2	0-5V	Green(White Stripe)	Black(White Stripe)		
L1	AC Voltage L1	White	Brown(White Stripe)	22 Wire on VR	AC Voltage Sensing(Includes Hz and RPM)
L2	AC Voltage L2	White(Black Stripe)	Red(White Stripe)	24 Wire on VR	