

Kohler-SDMO Nexys One Link Install

Parts list:

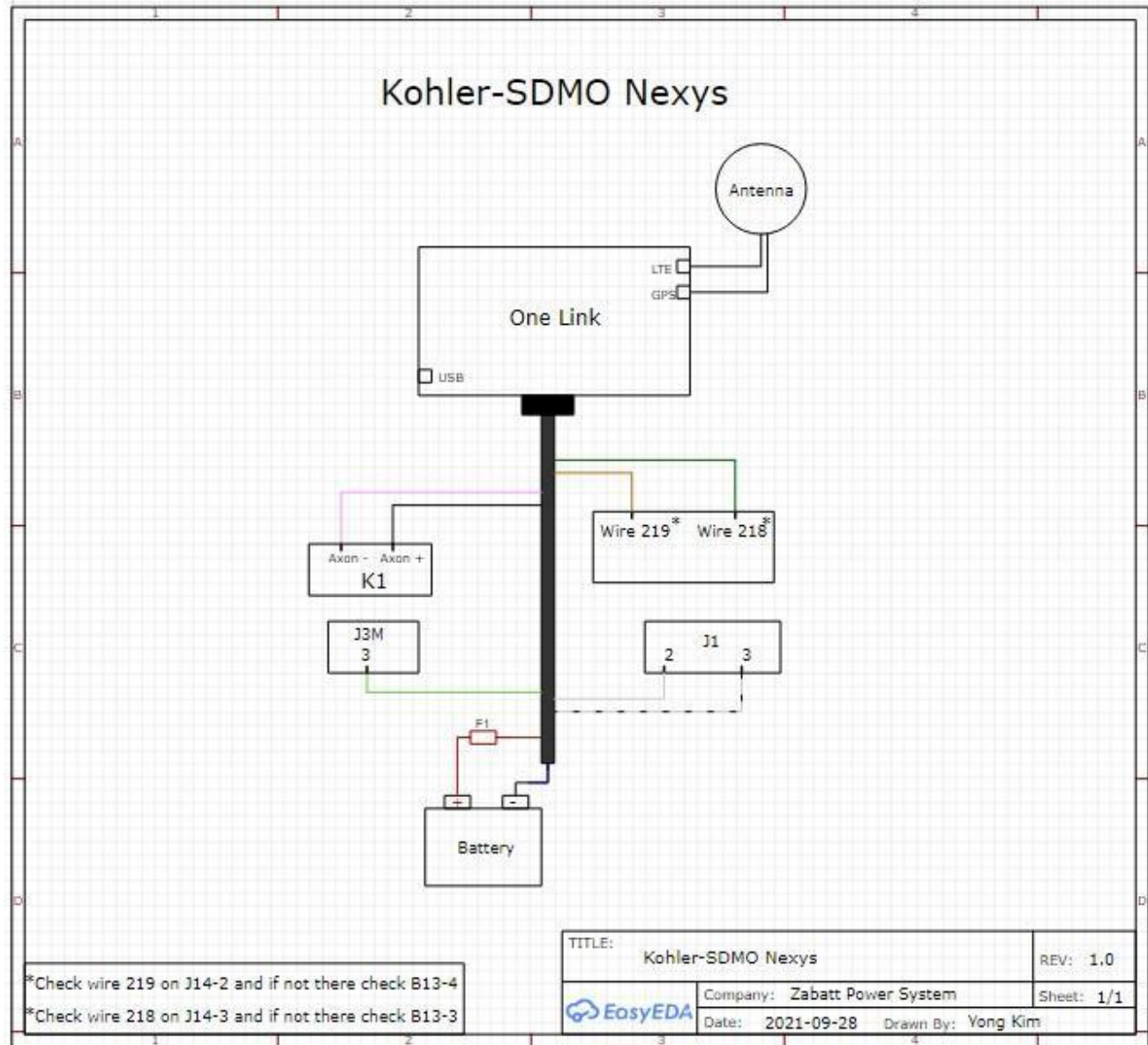
- | | |
|-----------------------------------|---|
| (1) One Link with magnetic mounts | (1) Battery wiring harness with inline fuse |
| (1) 4G LTE Antenna/GPS Antenna | (1) OLSC005 serial cable |
| (2) Lever wire connectors | (2) Zip ties |

Installation Instructions:

1. Put the generator in stop mode.
2. Disconnect the positive battery terminal. (**Do not reconnect the positive battery terminal until step 20.**)
3. Using the magnetic mounts, mount the One Link inside of the generator enclosure close to the controller. (**Be sure the mounting location is away from weather exposure.**)
4. Connect the ring connector on the **red** wire of the battery wiring harness to the positive (+) battery terminal.
5. Connect the ring connector on the **black** wire of the battery wiring harness to the negative (-) battery terminal.
6. Route the **brown** and **blue** wires from the One Link I/O cable to the battery wiring harness installed in steps 4 and 5.
7. Using one of the included lever wire connectors, connect the bare **black** wire from the battery wiring harness to the bare **blue** wire from the One Link I/O cable.
8. Using one of the included lever wire connectors, connect the bare **red** wire from the battery wiring harness to the bare **brown** wire from the One Link I/O cable.
9. Route the **orange** wire from the One Link I/O cable to Wire 219. (Wire 219 could be on J14-2 or B13-4.)
10. Route the **green** wire from the One Link I/O cable to Wire 218. (Wire 218 could be on J14-3 or B13-3.)
11. Route the **pink** wire from the One Link I/O cable to K1 axon (-).
12. Route the **black** wire from the One Link I/O cable to K1 axon (+).
13. Route the **light green** wire from the One Link I/O cable to J3M-3.
14. Route the **brown** wire with white stripe from the One Link I/O cable to wire 2 on J1-2.

15. Route the red wire with white stripe from the One Link I/O cable to wire 1 on J1-3.
16. Mount the LTE/GPS antenna on top of the generator enclosure.
17. Connect the LTE antenna cable to the top connector on the right side of the One Link.
18. Connect the GPS antenna cable to the bottom connector on the right side of the One Link.
19. Plug the 15 pin connector into the bottom of the One Link, and tighten both screws using a flathead screwdriver.
20. Reconnect the positive battery terminal to the battery.

At this time the One Link will power up and begin communicating with the generator. Please allow 5-10 minutes for the One Link to establish a connection to the internet, and then check the activation screen or your One Link account to ensure the generator's vitals update and the One Link is transmitting data.



One Link Wire Legend						
One Link			Old Gray I/O Cable	New Black I/O Cable	Location	Generator
Color	Description	One Link Function	Color	Color	Location	Generator Function
Red	Battery +	Battery +	Red	Brown	Battery +	Battery +
Black	Battery -	Battery -	Black	Blue	Battery -	Battery -
Red (White Stripe)	K1COM	K1COM	Red/White Stripe	Orange	J14 - 2 or B13 - 4 (wire 219)	Remote Start
Red (Black Stripe)	K1NO	K1NO	Red/Black Stripe	Green	J14 - 3 or B13 - 3 (wire 218)	
Orange	K2COM	K2COM	Orange	Yellow		
Orange (Black Stripe)	K2NC	K2NC	Orange/Black Stripe	Gray		
Black (White Stripe)	DI1	Close to Ground	Black/White Stripe	Pink	K1 axon -	Common Alarm
Blue (Black Stripe)	DI2	Close to Ground	Blue/Black Stripe	Red		
Blue (White Stripe)	DI3	Close to Batt +	Blue/White Stripe	Black	K1 axon +	Common Alarm
Blue	DI4	Close to Batt +	Blue	White		
Green (Black Stripe)	DI5	Close to Batt +	Green/Black Stripe	Purple		
Green	A1	0-5V	Green	Light Green	J3M - 3	Fuel Level? (optional)
Green (White Stripe)	A2	0-5V	Green/White Stripe	Black/White Stripe		
White	L1	AC Voltage L1	White	Brown/White Stripe	J1 - 2 (wire 2)	AC Voltage Sensing(Includes Hz and RPM)
White (Black Stripe)	L2	AC Voltage L2	White/Black Stripe	Red/White Stripe	J1 - 3 (wire 1)	