

## Kohler-APM402 V2 One Link Install

### Parts list:

- |                                   |   |
|-----------------------------------|---|
| (1) One Link with magnetic mounts | (1) Battery wiring harness with inline fuse |
| (1) 4G LTE Antenna/GPS Antenna    | (1) OLSC005 serial cable                    |
| (1) USB serial cable              | (2) Lever wire connectors                   |
| (2) Zip ties                      |   |

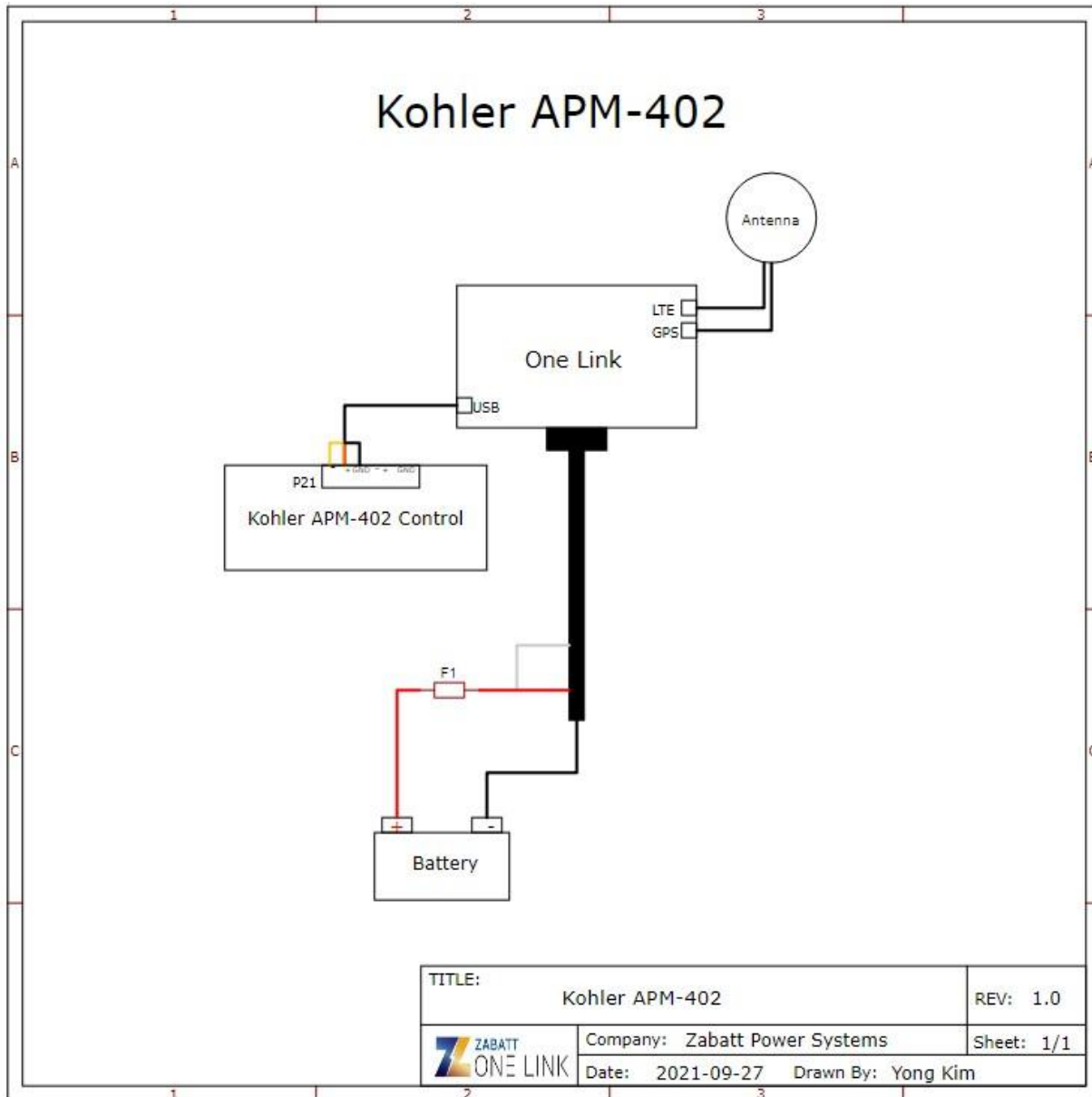
### Installation Instructions:






1. Put the generator in stop mode.
2. Disconnect the positive battery terminal. (**Do not reconnect the positive battery terminal until step 13.**)
3. Using the magnetic mounts, mount the One Link inside of the generator enclosure close to the controller. (**Be sure the mounting location is away from weather exposure.**)
4. Connect the ring connector on the **red** wire of the battery wiring harness to the positive (+) battery terminal.
5. Connect the ring connector on the **black** wire of the battery wiring harness to the negative (-) battery terminal.
6. Route the bare **red** wire, bare white wire, and **black** wire from the One Link I/O cable to the battery wiring harness installed in steps 4 and 5.
7. Using one of the included lever wire connectors, connect the bare **black** wire from the battery wiring harness to the bare **black** wire from the One Link I/O cable.
8. Using one of the included lever wire connectors, connect the bare **red** wire from the battery wiring harness to the bare **red** wire and bare white wire from the One Link I/O cable.
9. Connect the USB serial cable to the USB port on the side of the One Link, and route the following wires to Terminal P21 on the back of the control panel:
  - a. The **yellow** wire to the negative terminal.
  - b. The **orange** wire to the positive terminal.
  - c. The **black** wire to the ground terminal.
10. Mount the LTE/GPS antenna on the top of the generator.
11. Connect the LTE antenna cable to the top connector on the right side of the One Link.
12. Connect the GPS antenna cable to the bottom connector on the right side of the One Link.
13. Reconnect the positive battery terminal to the battery.



4612 Highway Ave  
Jacksonville, FL 32259  
(888) 366-7886

At this time the One Link will power up and begin communicating with the generator. Please allow 5-10 minutes for the One Link to establish a connection to the internet, and then check the activation screen or your One Link account to ensure the generator's vitals update and the One Link is transmitting data.



Wire Color Legend					
COLOR	DESCRIPTION	ILLUSTRATION	COLOR	DESCRIPTION	ILLUSTRATION
Red	(+) Battery		Orange	A1 (4-20ma)	
Black	(-) Battery		Orange(Black Stripe)	A2 (4-20ma)	
Blue(White Stripe)	K1 - NC		White	A3 (0-30VDC)	
Blue	K1 - COM		White(Black Stripe)	A4 (0-30VDC)	
Blue(Black Stripe)	K1 - NO		Green	Input Common	
Red(Black Stripe)	K2 - COM		Green(White Stripe)	DI1 (switch to ground)	
Red(White Stripe)	K2 - NO		Green(Black Stripe)	DI2 (switch to ground)	
Black(White Stripe)	No Connection		For technical assistance, please visit <a href="http://onelink.zabatt.com">onelink.zabatt.com</a>		