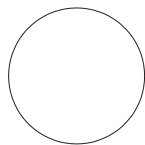
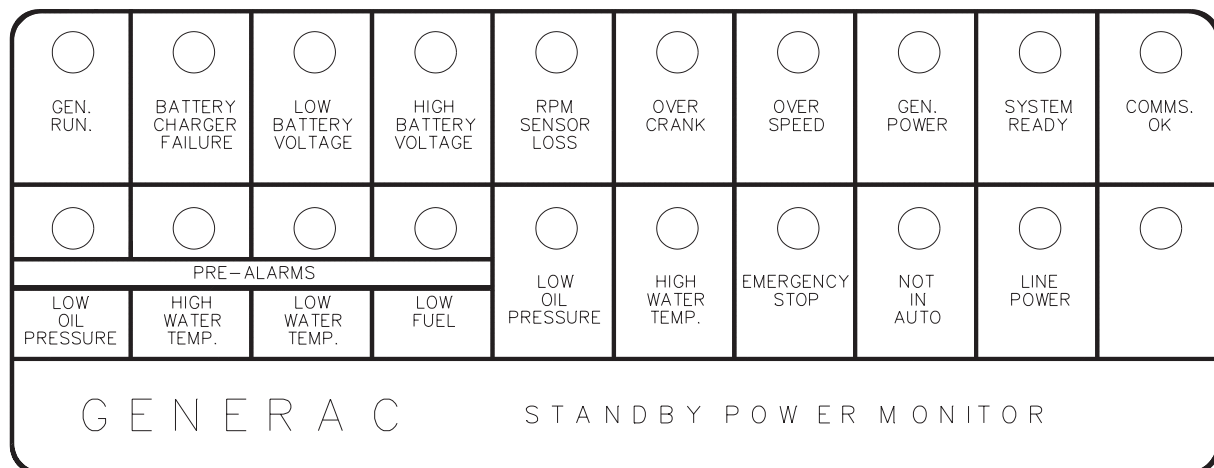


# GENERAC<sup>®</sup>

---

## POWER SYSTEMS, INC.

# 20 Light Remote Annunciator Owner's Manual



1 AMP



RESET  
ALARM



RE-ARM  
HORN



TEST



ON  
OFF

REMOTE START



ON  
OFF

A6733

### Surface Mount

000984-0

000984-1, 000984-2

004280-0

004280-1, 004280-2

004391-0, 004391-1

### Flush Mount

000985-0

000985-1, 000985-2

004281-0

004281-1, 004281-2

004392-0, 004392-1

### Standard Annunciator

### Annunciator w/Remote Relay Panel

### Time Multiplexed Annunciator

|                                       |          |   |                   |
|---------------------------------------|----------|---|-------------------|
| <b>Detailed Specifications .....</b>  | <b>2</b> | System Ready .....                            | 5                 |
| Environmental Specs .....             | 2        | Communication OK .....                        | 5                 |
| Power Supply Requirements .....       | 2        | Spare .....                                   | 5                 |
| Communication With D/E Panel .....    | 2        | Audible Annunciator .....                     | 5                 |
| Interface With Other Equipment .....  | 2        | Test Switch .....                             | 5                 |
| Agency Compliance .....               | 2        | Re-Arm Horn Switch .....                      | 5                 |
| Transportation and Storage .....      | 2        | Reset Switch .....                            | 5                 |
| Packaging and Mounting .....          | 2        | Relay Output .....                            | 5                 |
| Annunciator Panel Mounting .....      | 3        | <b>Software Specification .....</b>           | <b>5</b>          |
| <b>System Specification .....</b>     | <b>3</b> | Serial Interface .....                        | 5                 |
| Passive Mode .....                    | 3        | Request Frequency .....                       | 5                 |
| Setting to Passive Mode .....         | 3        | Operator Functions .....                      | 5                 |
| Hardware Functional Description ..... | 3        | Error Handling .....                          | 5                 |
| Generator Stop Signals .....          | 4        | Hardware Watchdog .....                       | 6                 |
| Warning Indicators .....              | 4        | Time Multiplexed 20 LT Annunciator .....      | 6                 |
| Generator Power .....                 | 4        | <b>E Panel Interconnection Diagram .....</b>  | <b>7</b>          |
| Line Power .....                      | 4        | <b>Electrical Schematics .....</b>            | <b>8</b>          |
| Battery Charger AC Failure .....      | 4        | <b>Exploded Views &amp; Parts Lists .....</b> | <b>10</b>         |
| System Status Indicators .....        | 5        | <b>Troubleshooting .....</b>                  | <b>Back Cover</b> |

## DETAILED SPECIFICATIONS

### ◆ ENVIRONMENTAL SPECS

|             |                         |
|-------------|-------------------------|
| Temperature | -20°C to +50°C          |
| Humidity    | 0 to 95% Non Condensing |

### ◆ POWER SUPPLY REQUIREMENTS

|                      |  |
|----------------------|--|
| Power Supply Source  | Generator Battery to comply with NFPA                  |
| Nominal Supply       | +12 to +24VDC  |
| Transient protection | Spikes clamped to 40V                                  |
| Power Usage          | 150mA maximum.   |
| Battery Supply cable | 2 wire - DC resistance less than 7 Ohms per conductor. |
| Fuse on front panel  | 1 Amp  |

### ◆ COMMUNICATION WITH D/E PANEL

|                     |  |
|---------------------|--|
| Communication link  | 2 wire RS485 fully isolated.             |
| Communication cable | 2 wire—twisted pair with overall screen. |
| Cable size          | 24 AWG 0-250 feet. 18 AWG 0-1,200 feet.  |
| Baud rate           | 2400/4800/9600 bd<br>Auto detect.        |

#### NOTE:

1. Ensure the generator control panel is set to the proper protocol.

2. The RS485 cable should not be run in the same conduit, or in the same grouping as any high voltage or other “noisy” electrical conductors.

3. Avoid running the RS485 cable through any “high noise” environments.

### ◆ INTERFACE WITH OTHER EQUIPMENT

|                    |   |
|--------------------|---|
| Alarm Relay Output | 1 pair N/O Volt-free contacts-<br>100mA, 24V DC |
|--------------------|---|

### ◆ AGENCY COMPLIANCE

|          |     |
|----------|-----|
| NFPA-110 | Yes |
| NFPA-99  | Yes |

### ◆ TRANSPORTATION AND STORAGE

|             |                      |
|-------------|----------------------|
| Temperature | -20°C to +80°C       |
| Humidity    | 0-95% Non Condensing |

### ◆ PACKAGING AND MOUNTING

|                     |  |
|---------------------|--|
| Enclosure type      | Sheet metal box.   |
| Base panel          | Part #A6985/A7437  |
| Front panel         | Part #A6988/A7443  |
| Panel overlay       | Part #A6733  |
| Field replacement   | Physically replaceable with Model #9556 electrically not compatible. |
| Mounting            | Flush or Wall.   |
| Weight requirements | None   |
| Manuals             | Yes - Operator guide   |

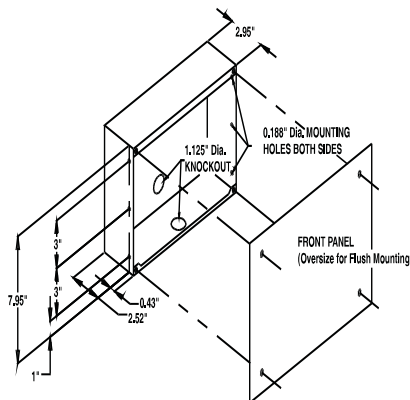
## ◆ ANNUNCIATOR PANEL MOUNTING

### NOTE:

**For ALL models installation must always comply with applicable codes, standards, laws and regulations. Adhere strictly to local, state and national electrical and building codes. Comply with regulations the Occupational Safety and Health Administration (OSHA) have established. Also, the generator and related components must be installed completely in conformance with the manufacturer's instructions and recommendations. Following proper installation, do nothing that might alter a safe installation and render the unit in non-compliance with such codes, standards, laws and regulations.**

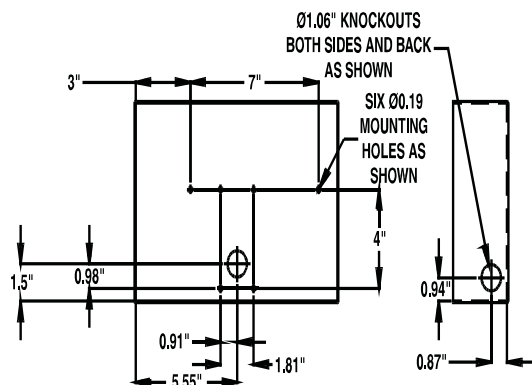
The Remote Annunciator panels (Models 000985-0, 000985-2, 004281-0, 004281-2, 004392-0, 004392-1, 000985-1, 004281-1) are intended for flush mounting. Panel mounting dimensions are shown in the illustration below. The panel can be installed behind a cutout in an existing sheet metal panel by using the four mounting holes in its front panel. For wall mounting, use a square outlet box behind the annunciator panel.

**Flush Mounting Dimensions**



The Remote Annunciator panels (Models 000984-0, 000984-2, 004280-0, 004280-2, 004391-0, 004391-1, 000984-1, 004280-1) are mounted using any combination of the mounting holes in the back panel of the box itself.

**Surface Mount Dimensions**



## SYSTEM SPECIFICATION

The 20 Light Remote Annunciator Panel (RAP) directly interacts with the the D/E panel generator and provides remote monitoring and annunciation of 17 generator parameters, 2 system-level warnings—System Ready and Communications OK and 1 spare channel.

It is similar to the existing Model 09556-0 Remote Annunciator unit which interfaces with the 'C' Panel display, the main difference being that it interfaces to the D/E Panels via a 2 wire RS485 serial data link rather than a direct multiway cable.

Power to the RAP is supplied from the generator battery (+12V to +24V) via a 2 wire link.

## ◆ PASSIVE MODE

The 20 light remote annunciator is an active device which periodically makes a request to the generator control panel for information. However, the 20 light annunciator can be set to passive mode. This mode allows the user to connect a second 20 light remote annunciator to the generator control panel.

## ◆ SETTING TO PASSIVE MODE

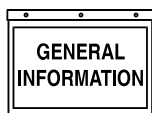
This passive mode feature is available on Models 000984-1, 000984-2, 000985-1, 000985-2, 004280-1, 004280-2, 004281-1, 004281-2. To set the 20 light annunciator to passive mode, simply connect an 18 to 22 gauge wire between header positions J3-1 and J3-2.

### NOTE:

1. It is not recommended to connect more than a total of two 20 light remote annunciator panels. (one set to active mode, one set to passive mode)
2. Up to four remote relay panels can be used with the two 20 light remote annunciators.
3. If only one 20 light remote annunciator is connected to a generator control panel, it must be left in active mode. (without the wire link between J3-1 and J3-2)

## ◆ HARDWARE FUNCTIONAL DESCRIPTION

The RAP queries the D/E panel once every three seconds and receives the generator status parameters. It will update the light panel and audible annunciator as detailed below.



### ◆ GENERATOR STOP SIGNALS

These lights will flash when any alarm occurs and the horn will sound as follows:

| Annunciator Light | Light Color | Audible Alarm |
|-------------------|-------------|---------------|
| RPM Sensor Loss   | Red         | Yes           |
| Overcrank         | Red         | Yes           |
| Overspeed         | Red         | Yes           |
| Low Oil Pressure  | Red         | Yes           |
| High Water Temp   | Red         | Yes           |
| Emergency Stop    | Red         | Yes           |

The 'Re-Arm Horn' switch can be used to turn off and re-arm the horn, or the alarms can be fully acknowledged using the 'Reset' switch.

The 'Reset' switch will turn off and re-arm the horn, and any flashing lights will switch to the ON state until the alarms are no longer present at the D/E panel.

#### NOTE:

**Alarm condition MUST be reset at the generator set control panel.**

### ◆ WARNING INDICATORS

These lights will flash when any alarm occurs and the horn will sound according to the following table :

| Annunciator Light          | Light Color | Audible Alarm | Latched |
|----------------------------|-------------|---------------|---------|
| Pre-Low Oil Pressure       | Yellow      | Yes           | Yes     |
| Pre-High Water Temp        | Yellow      | Yes           | Yes     |
| Pre-Low Water Temp         | Yellow      | Yes           | Yes     |
| Pre Low Fuel               | Yellow      | Yes           | Yes     |
| Battery Charger AC Failure | Yellow      | Yes           | No      |
| Low Battery Voltage        | Yellow      | Yes           | No      |
| High Battery Voltage       | Yellow      | No            | No      |
| Generator Run              | Yellow      | No            | No      |
| Generator Power            | Yellow      | No            | No      |
| Not in Auto                | Red         | Yes           | No      |

These alarms will be latched/not latched by the RAP according to the above table. They can be acknowledged at the RAP using the 'Reset' switch—the active lamps will then stop flashing and remain in the ON state until the alarm signal disappears from the D/E Panel. The 'Reset' switch will also turn off and re-arm the horn.

#### NOTE:

**These lamps can only be fully reset when the alarm state is no longer active and "Reset" has been pressed at both the D/E panel and the RAP.**

**Alternatively, at any time the horn can be turned OFF and re-armed with the 'Re-Arm Horn' switch.**

### ◆ GENERATOR POWER

Is defined as whether transfer switch is in Generator supply position—measured from transfer switch through the generator control panel.

**D-Panel Connection** - connects to signal RA-5 which comes from CPU board J7 pin 9. There is no D Panel programming required.

**E-Panel Connection** - connects to signal A2 (PRG INPT 2) which comes from E panel master control box CON1 pin 2. Suggested settings for PRG INPT 2: Generator Power, Low, Always, Status

#### NOTE:

**Wire 0 from the D/E Panel must be connected to the "Common" terminal on the transfer switch "Aux" contacts, for these indicators to work properly. Do NOT connect DC voltage to these circuits. This is a digital signal circuit ONLY.**

### ◆ LINE POWER

Is defined as whether the transfer switch is in Utility supply position—measured from transfer switch through the generator control panel.

**D-Panel Connection** - connects to signal RA-4 which comes from CPU board J7 pin 10. There is no D panel programming required.

**E-Panel Connection** - connects to signal A3 (PRG INPT3) which comes from E panel master control box CON1 pin 3. Suggested settings for PRG INPT 3: Line Power, Low, Always, Status

#### NOTE:

**Wire 0 from the D/E Panel must be connected to the "Common" terminal on the transfer switch "Aux" contacts, for these indicators to work properly. Do NOT connect DC voltage to these circuits. This is a digital signal circuit ONLY.**

### ◆ BATTERY CHARGER AC FAILURE

This light annunciates upon loss of 120 VAC power supply to the battery charger. This requires an AC relay with normally closed contacts connected in the circuit feeding power to the battery charger. The relay contacts need to be wired to terminals on the D/E control panel.

#### NOTE:

**To prevent false alarms caused by brief power outages or load switching, a time delay AC relay (approx. 30 second delay) is suggested.**

**D-Panel Connection** - connects to signal RA-12 which comes from CPU board J7 pin 1. There is no D panel programming required.

**E-Panel Connection** - connects to signal A1 (PRG INPT1) which comes from E panel master control box CON1 pin 1. Suggested settings for PRG INPT1: Battery Charge Fail, Low, Always, Non-Latch

| Annunciator Light | Light Color | Audible Alarm |
|-------------------|-------------|---------------|
| System Ready      | Green       | No            |
| Communication OK  | Green       | Yes           |
| Line Power        | Green       | No            |
| Spare             | Green       | No            |

### ◆ SYSTEM STATUS INDICATORS

These lamps are for Status indication only—the normal condition is ON.

### ◆ SYSTEM READY

For Models:

|          |          |
|----------|----------|
| 000984-0 | 000985-0 |
| 000984-1 | 000985-1 |
| 004280-0 | 004281-0 |
| 004280-1 | 004281-1 |
| 004391-0 | 004392-0 |

Status light is dependent upon the following conditions:

- Generator must be set to “Auto” mode.
- Battery power (+12V or +24V) must be present (for example, low battery voltage lamp is off.)
- None of the annunciator’s alarm or pre-alarm lamps are lit.

For Models:

|          |          |
|----------|----------|
| 000984-2 | 000985-2 |
| 004280-2 | 004281-2 |
| 004391-1 | 004392-1 |

Status light is dependent upon conditions a, b, and c (from above), plus the following:

- There are no generator engine sensor faults (for example, oil pressure, coolant temperature, etc.) A fault is considered either an open or shorted sensor.
- “D” Panel application: The spare warning 2 light is not lit.
- “E” Panel application: There are no user programmable shutdowns active.

#### NOTE:

**For models 000984-2, 000985-2, 004280-2, 004281-2, 004391-1, 004392-1: Conditions d, e, and f will only be considered if the generator’s control panel is running the following software:**

**“D” Panel software version V1.11 or later.**

**“E” Panel software version V1.15 or later.**

**Otherwise the annunciator will still be fully functional, but will only follow conditions a, b, and c.**

### ◆ COMMUNICATION OK

This light indicator is ON as long as there is proper communication between the RAP and the D/E panel. The light is turned OFF if the RAP does not receive a valid RS485 response from the D/E panel defined as either:

- Three consecutive data requests from the RAP are ignored.
- Three consecutive data responses contain data errors — string length or non valid characters.

When communication failure occurs, the RAP will flash the Communication OK LED, and sound the Horn. The rate of flashing will be indicative of the cause of the error.

- No reply from D/E panel -  
frequency one sec on/one sec off.
- Consecutive data errors -  
frequency .05 sec on/two sec off.

This alarm condition can be acknowledged at the RAP using the ‘Reset’ switch — the horn will be turned off and re-armed and the communication OK light will continue to flash until proper communication returns.

### ◆ SPARE

The spare LED does not perform any function in a “D” panel application, but it can be used in an “E” panel application. To make the “E” panel connection, connect to signal A4 (PRG INPT 4) which comes from the “E” Panel Master Control Box CON1 pin 4.

When signal A4 is active, the Spare LED will flash and can be reset or cleared in the same manner as the warning indicators described earlier. NOTE that the horn will not sound.

### ◆ AUDIBLE ANNUNCIATOR

See System Status Indicators chart for alarm occurrences.

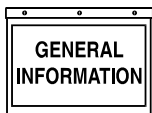
### ◆ TEST SWITCH

While the test switch is pressed, all lights will light and the horn will sound. When released the lights will return to their original status. During this test, communication to D/E panel will be suspended.

### ◆ RE-ARM HORN SWITCH

The re-arm horn switch will silence the horn and re-arm it for new alarm occurrences.





### ◆ RESET SWITCH

The reset switch is used to acknowledge any active alarms. It will re-set any flashing light to ON (steady) condition. If the alarm no longer exists and it has also been latched OFF at the D/E panel (Pre-Alarm indicators only) the active light will go OFF. It will also silence the horn and re-arm it for new alarm occurrences.

#### NOTE:

**Pre-Alarm Conditions MUST be reset at the generator set control panel.**

### ◆ RELAY OUTPUT

The RAP will also provide a pair of Normally Open contacts which will mimic the status of the Audible alarm (Horn). The relay output is fail-safe i.e. DC supply failure will reset the relay to OFF, which will close the contacts.

## SOFTWARE SPECIFICATION

In general terms, the RAP polls the D/E Panel. The D/E panel returns an ASCII text string which represents the status of the indicator lights on the panel display.

### ◆ SERIAL INTERFACE

|             |               |
|-------------|---------------|
| Default     | 4800,n,8,1    |
| Auto-detect | 2400, 9600bd. |

### ◆ REQUEST FREQUENCY

Once per three seconds.

### ◆ OPERATOR FUNCTIONS

Switches will be scanned every 1/10 second.

### ◆ ERROR HANDLING

An error will be reported by flashing the Communication OK light—the rate of flashing will be indicative of the cause of the error.

- No reply from D/E panel—frequency one sec on / one sec off.
- Consecutive data errors—frequency 0.5 sec on / two sec off.

### ◆ HARDWARE WATCHDOG

Will reset the CPU if :

- Supply voltage at CPU drops below 4.65V.
- CPU activity stops for 15 sec.

## ◆ TIME MULTIPLEXED 20 LIGHT REMOTE ANNUNCIATOR

### Model Numbers:

|        |               |
|--------|---------------|
| 004391 | Flush mount   |
| 004392 | Surface mount |

#### (For use with the “E” option control panel only)

These versions of the 20 light remote annunciator will allow the “E” option control panel to communicate with both the 20 light remote annunciator/remote relay panel and Genlink.

### System Requirements

- E panel software version V1.07 or later
- 20 light time multiplexed remote annunciator
- Genlink Version V4.xx or later
- 200 Mhz Pentium PC or equivalent (minimum)

### System Setup

The modem must be initialized with an appropriate “set-up string” prior to being used in this system. If a US Robotics 56K V90 modem is used, this “set-up string” can be sent by the “E” control module. To initialize the modem using the “E” control module, follow the step-by-step instructions titled “E PANEL MODEM SETUP PROCEDURE” found in the “E” panel owner’s manual (p/n 0A7605). NOTE: When performing this modem initialization, a standard 25 to 9 pin modem cable is required. This cable is no longer needed once the modem has been initialized. Once this procedure has been completed, return to this section and continue with the system set-up procedure outlined below.

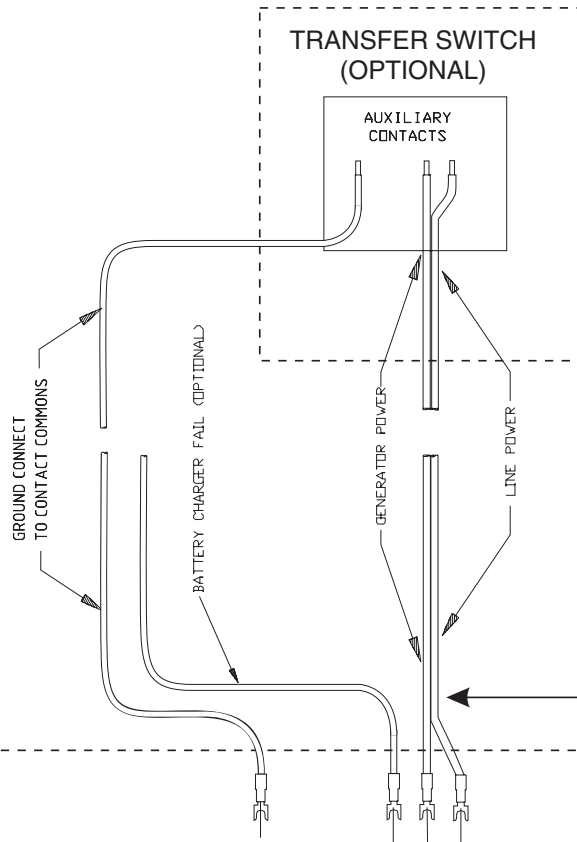
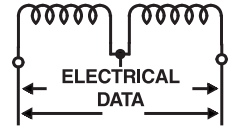
- Set the E panel for RS485 communications
- Set the modem dip switches as shown in the wiring diagram **0C5770-A**
- Power cycle the modem (after setting the dip switches)

#### NOTE:

- The time multiplexed 20 light remote annunciator does not support passive mode operation. This means that only one 20 light remote annunciator can be used.**
- Up to four remote relay panels may be added to this system. The remote relay panels must have software version A9041 rev C or later.**

## 20 Light Remote Annunciator

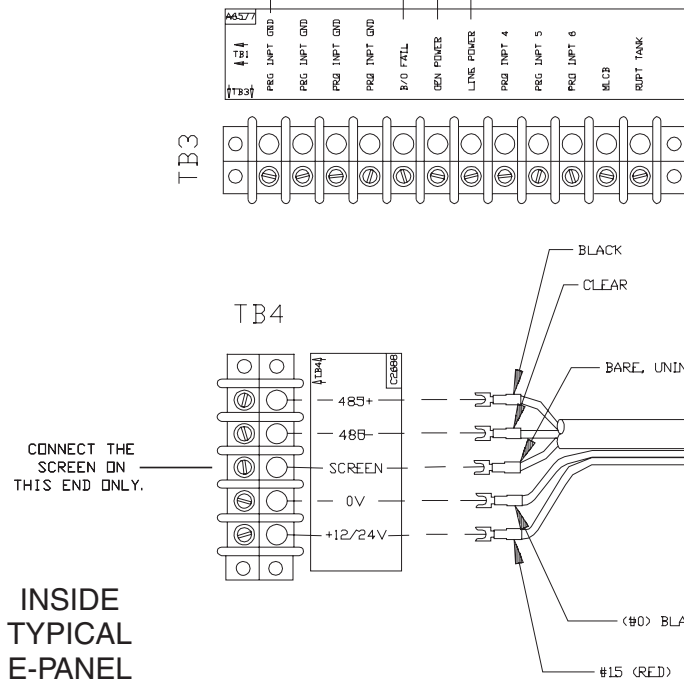
### E Panel Interconnection Diagram



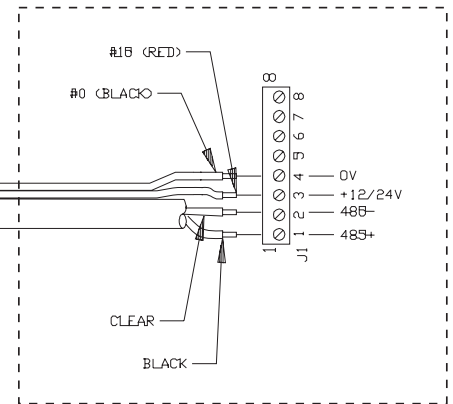
NOTES: REQUIRED WIRE GAUGE  
FOR LENGTH OF RUN.  
18 AWG UP TO 1200 FT.  
24 AWG UP TO 250 FT.

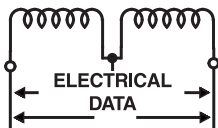
WIRING DIAGRAM FOR CUSTOMER  
CONNECTION OF THE E-PANEL  
TO REMOTE ANNUNCIATOR.

CONTROL WIRES MUST BE  
IN SEPARATE CONDUIT  
FROM AC FEEDS.



#### J1 INSIDE REMOTE ANNUNCIATOR

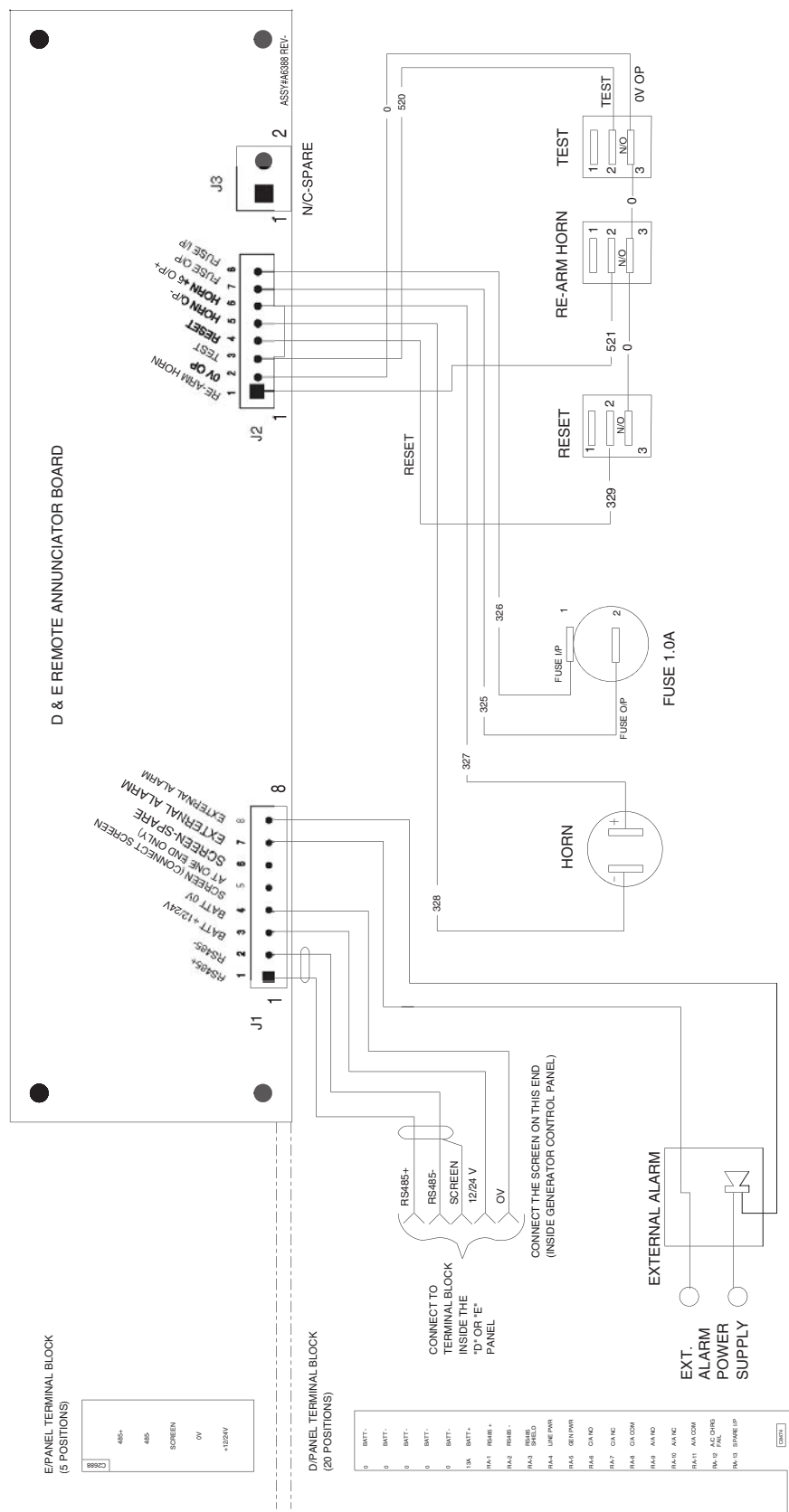




## 20 Light Remote Annunciator

### Electrical Schematic – Drawing No. 0A7169-B

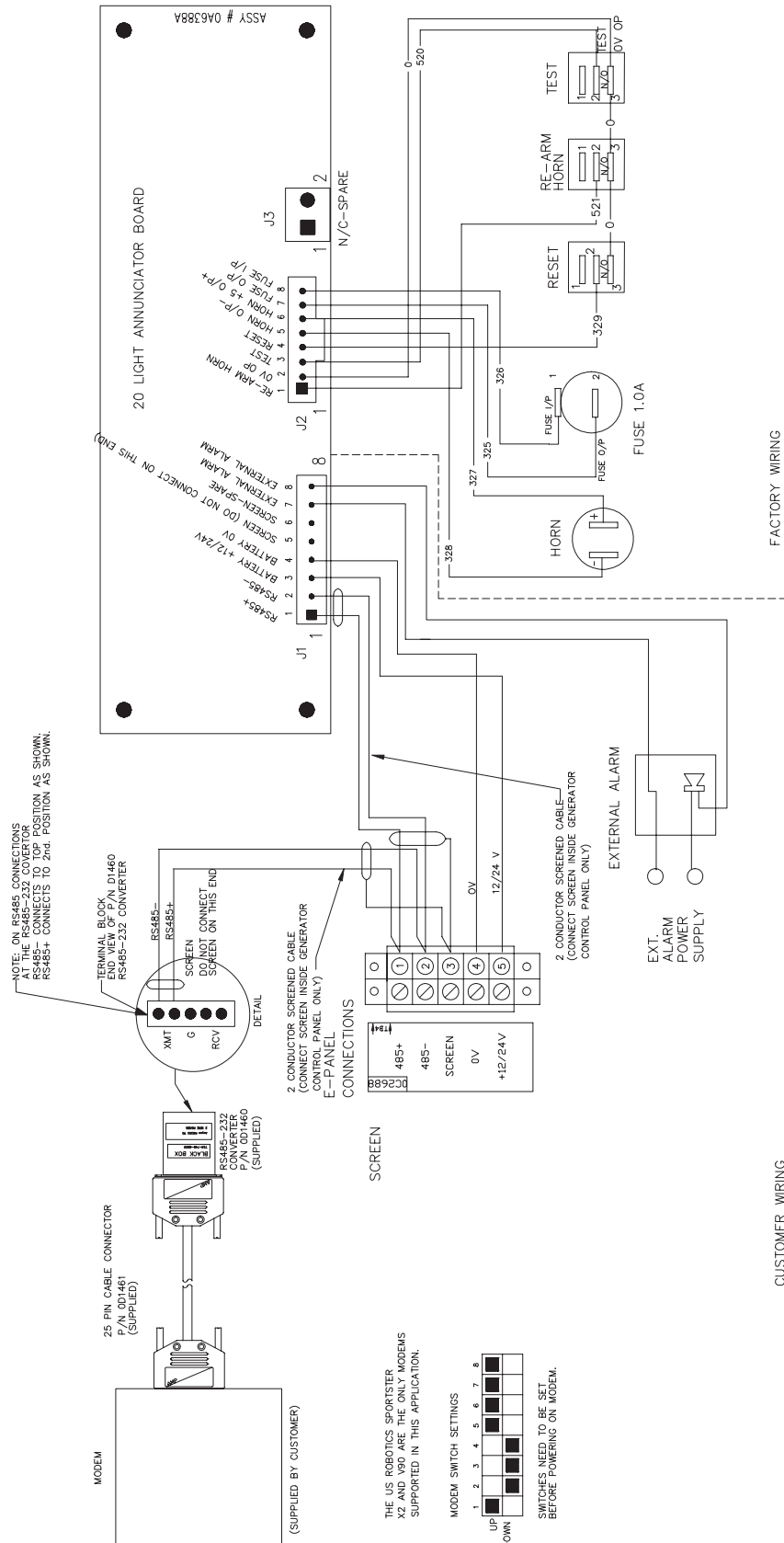
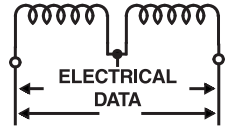
For Models: 000984-0, 000984-1, 000984-2 000985-0, 000985-1, 000985-2, 004280-0, 004280-1, 004280-2, 004281-0, 004281-1, 004281-2



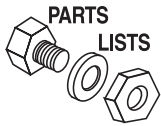


## 20 Light Remote Annunciator

### Electrical Schematic – Drawing No. 0C5770-B For Models: 004391-0, 004391-1, 004392-0, 004392-1

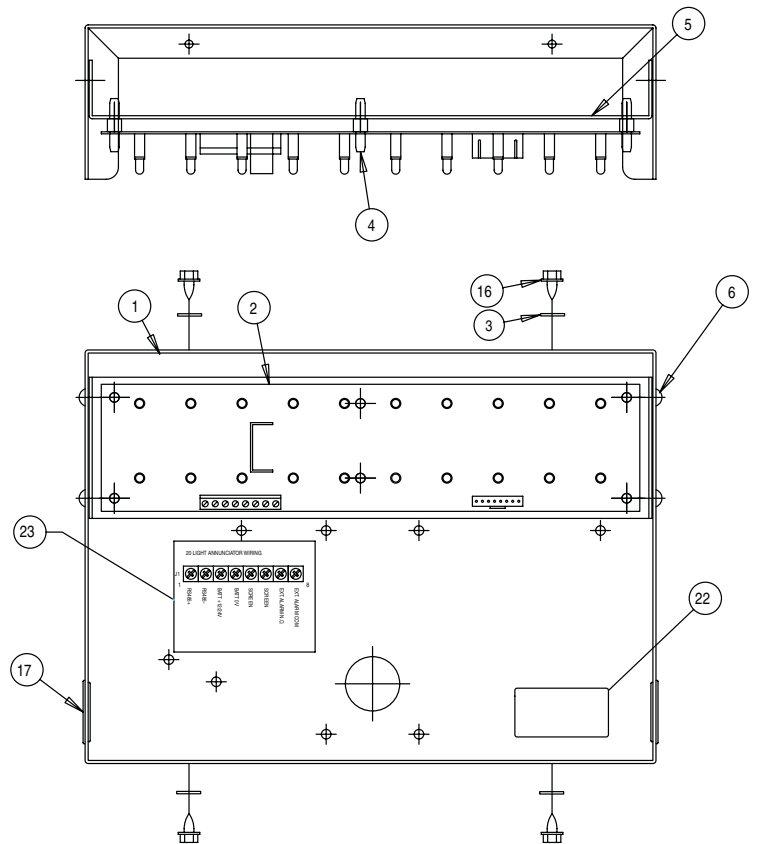
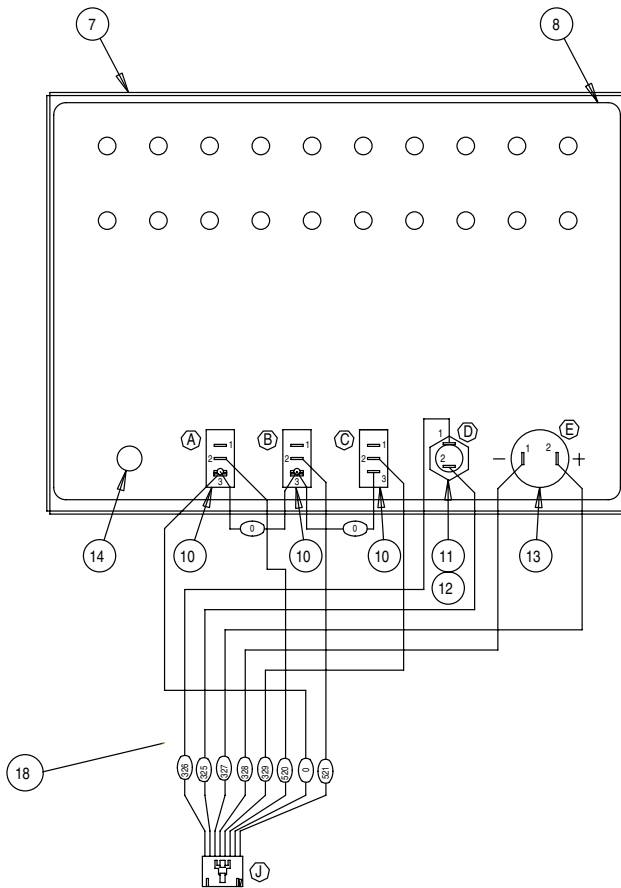


NOTE: THIS IS THE TIME MULTIPLEXED VERSION OF THE 20 LIGHT ANNUNCIATOR TO BE USED WITH THE "E" OPTION CONTROL PANEL ONLY.



## 20 Light Remote Annunciator

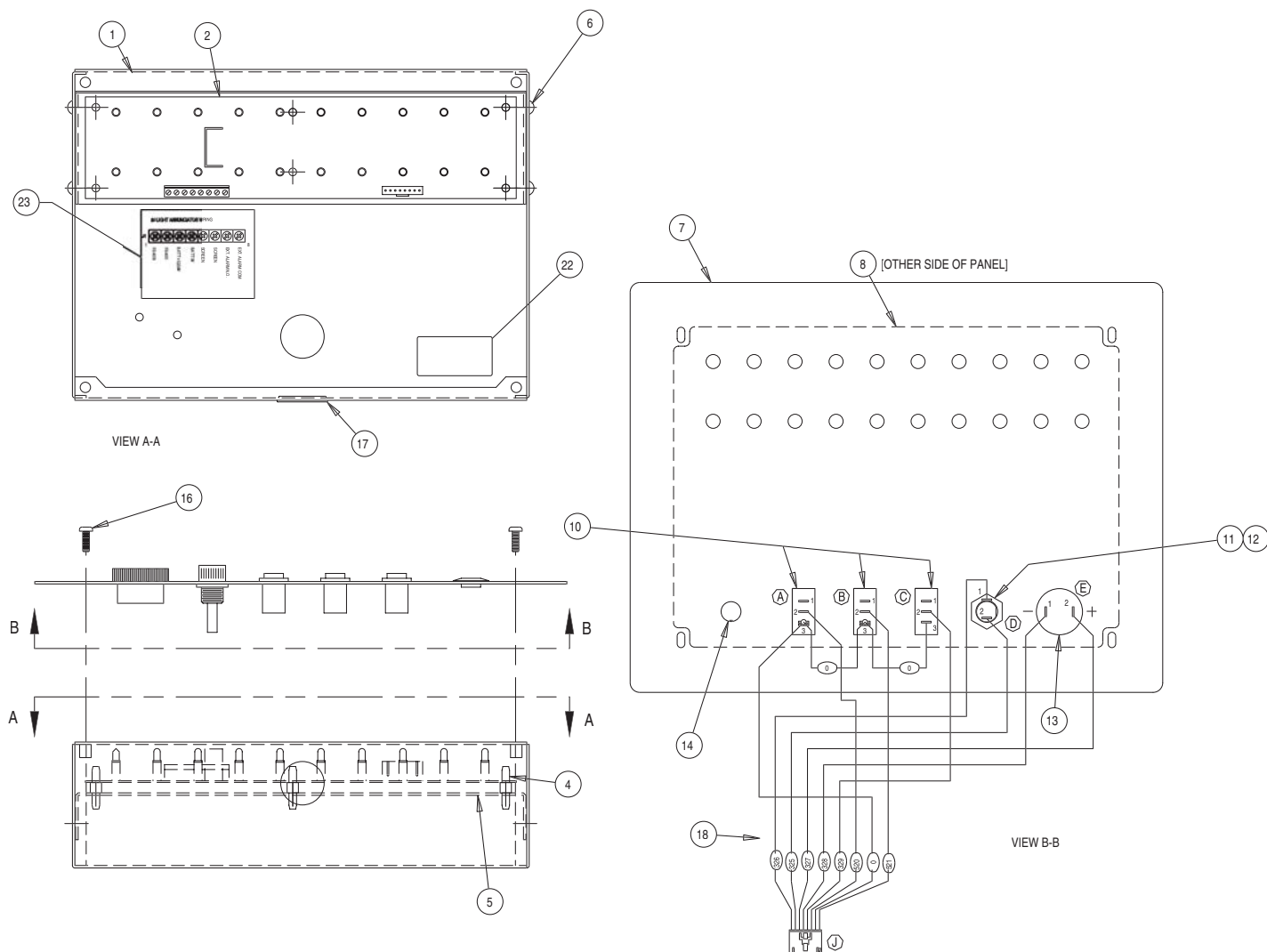
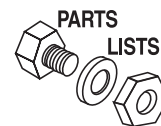
Surface Mount Assembly – Drawing No. 0A6991-L  
Models 000984-0, 000984-1, 000984-2



| ITEM | PART NO. | QTY. | DESCRIPTION                       |
|------|----------|------|-----------------------------------|
| 1    | 0A6985   | 1    | PANEL ANNUNCIATOR REAR            |
| 2    | 0A6388   | 1    | ASSY PCB 20LT ANN D/E PNL         |
| 3    | 052621   | 4    | WASHER NYLON .200                 |
| 4    | 040213   | 6    | PCB SUPPORT SNAP-IN 1/4"          |
| 5    | 0A6990   | 1    | SUPPORT, PC BOARD                 |
| 6    | 036261   | 4    | RIVET POP .125 X .275 AL          |
| 7    | 0A6988   | 1    | PANEL ANNUNCIATOR FRONT           |
| 8    | 0A6733   | 1    | DECAL 20LT ANNUN PANEL GENERAC    |
| 10   | 061284   | 3    | SWITCH ROCKER SPST 10@125V SPD    |
| 11   | 032300   | 1    | HOLDER FUSE                       |
| 12   | 044299   | 1    | FUSE 1A X AGC1                    |
| 13   | 061286   | 1    | SOUNALERT, BUZZER                 |
| 14   | 065511   | 1    | PLUG PANEL PLASTIC 1/2"           |
| 16   | 056892   | 4    | SCREW CRIMPTITE 10-24 X 3/8       |
| 17   | 025034   | 2    | PLUG STEEL 1.0625                 |
| 18   | 0E5620   | 1    | HARNESS, 10 WIRE REMOTE ANN       |
| 22   | 0D8477   | 1    | DECAL, MODEL # SOFTWARE REQUIR    |
| 23   | 0D4462   | 1    | DECAL, WIRING, REMOTE ANNUNCIATOR |

## 20 Light Remote Annunciator

Flush Mount Assembly — Drawing No. 0A7440-J  
Models 000985-0, 000985-1, 000985-2



| ITEM | PART NO. | QTY. | DESCRIPTION                       |
|------|----------|------|-----------------------------------|
| 1    | 0A7437   | 1    | PANEL ANNUNCIATOR REAR            |
| 2    | 0A6388   | 1    | ASSY PCB 20LT ANN D/E PNL         |
| 4    | 040213   | 6    | PCB SUPPORT SNAP-IN 1/4"          |
| 5    | 0A6990   | 1    | SUPPORT, PC BOARD                 |
| 6    | 036261   | 4    | RIVET POP .125 X .275 AL          |
| 7    | 0A7438   | 1    | PANEL ANNUNCIATOR FRONT           |
| 8    | 0A6733   | 1    | DECAL 20LT ANNUN PANEL GENERAC    |
| 10   | 061284   | 3    | SWITCH ROCKER SPST 10@125V SPD    |
| 11   | 032300   | 1    | HOLDER FUSE                       |
| 12   | 044299   | 1    | FUSE 1A X AGC1                    |
| 13   | 061286   | 1    | SOUNALERT, BUZZER                 |
| 14   | 077704   | 1    | PLUG PANEL PLASTIC 1/2"           |
| 16   | 036918   | 4    | SCREW PPHM #8-32 X 1/2            |
| 17   | 025034   | 2    | PLUG STEEL 1.0625                 |
| 18   | 0E5620   | 1    | HARNESS, 10 WIRE REMOTE ANN       |
| 22   | 0D8477   | 1    | DECAL, MODEL # SOFTWARE REQUIR    |
| 23   | 0D4462   | 1    | DECAL, WIRING, REMOTE ANNUNCIATOR |



## 20 Light Remote Annunciator

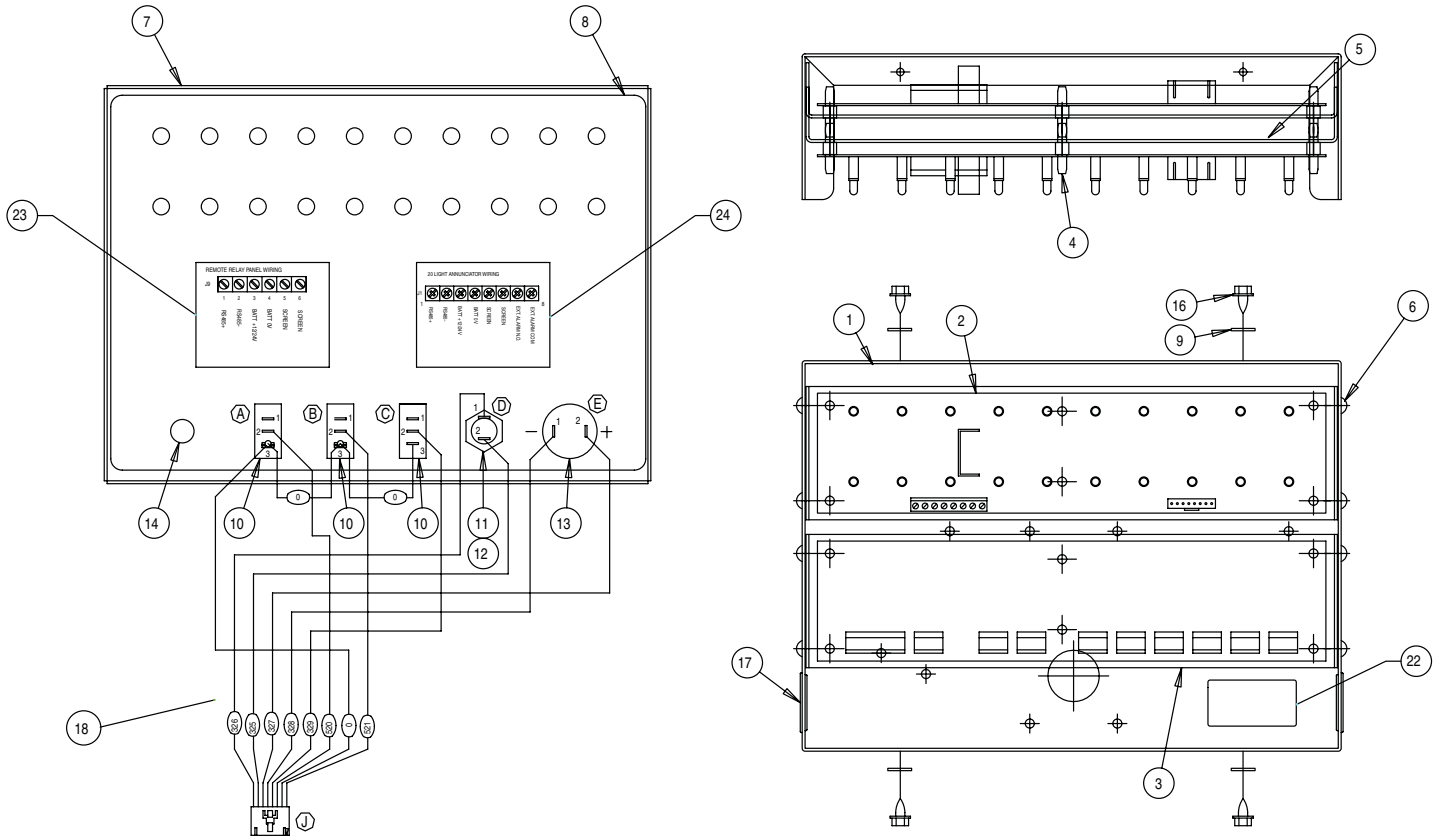
Surface Mount Assembly – Drawing No. 0C4937-G

Models 004280-0, 004280-1, 004280-2

20 Light Remote Annunciator with Remote Relay Panel

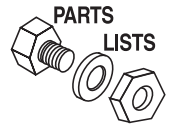
### NOTE:

**Model 004280-0 DOES NOT work in a “D” panel application.  
Model 004280-1 & 004280-2 DOES work in a “D” panel application.**



| ITEM | PART NO. | QTY. | DESCRIPTION                       |
|------|----------|------|-----------------------------------|
| 1    | 0A6985   | 1    | PANEL ANNUNCIATOR REAR            |
| 2    | 0A6388   | 1    | ASSY PCB 20LT ANN D/E PNL         |
| 3    | 0A9036   | 1    | ASSY PCB 8-CH REM RLY RRP STD     |
| 4    | 040213   | 12   | PCB SUPPORT SNAP-IN 1/4"          |
| 5    | 0A6990   | 2    | SUPPORT, PC BOARD                 |
| 6    | 036261   | 8    | RIVET POP .125 X .275 AL          |
| 7    | 0A6988   | 1    | PANEL ANNUNCIATOR FRONT           |
| 8    | 0A6733   | 1    | DECAL 20LT ANNUN PANEL GENERAC    |
| 9    | 052621   | 4    | WASHER NYLON .200                 |
| 10   | 061284   | 3    | SWITCH ROCKER SPST 10@125V SPD    |
| 11   | 032300   | 1    | HOLDER FUSE                       |
| 12   | 044299   | 1    | FUSE 1A X AGC1                    |
| 13   | 061286   | 1    | SOUNALERT, BUZZER                 |
| 14   | 065511   | 1    | PLUG PANEL PLASTIC 1/2"           |
| 16   | 056892   | 4    | SCREW CRIMPTITE 10-24 X 3/8       |
| 17   | 025034   | 2    | PLUG STEEL 1.0625                 |
| 18   | 0E5620   | 1    | HARNESS, 10 WIRE REMOTE ANN       |
| 22   | 0D8479   | 1    | DECAL, MODEL # SOFTWARE REQUIR    |
| 23   | 0D4461   | 1    | DECAL, MODEL # SOFTWARE REQUIR    |
| 24   | 0D4462   | 1    | DECAL, WIRING, REMOTE ANNUNCIATOR |

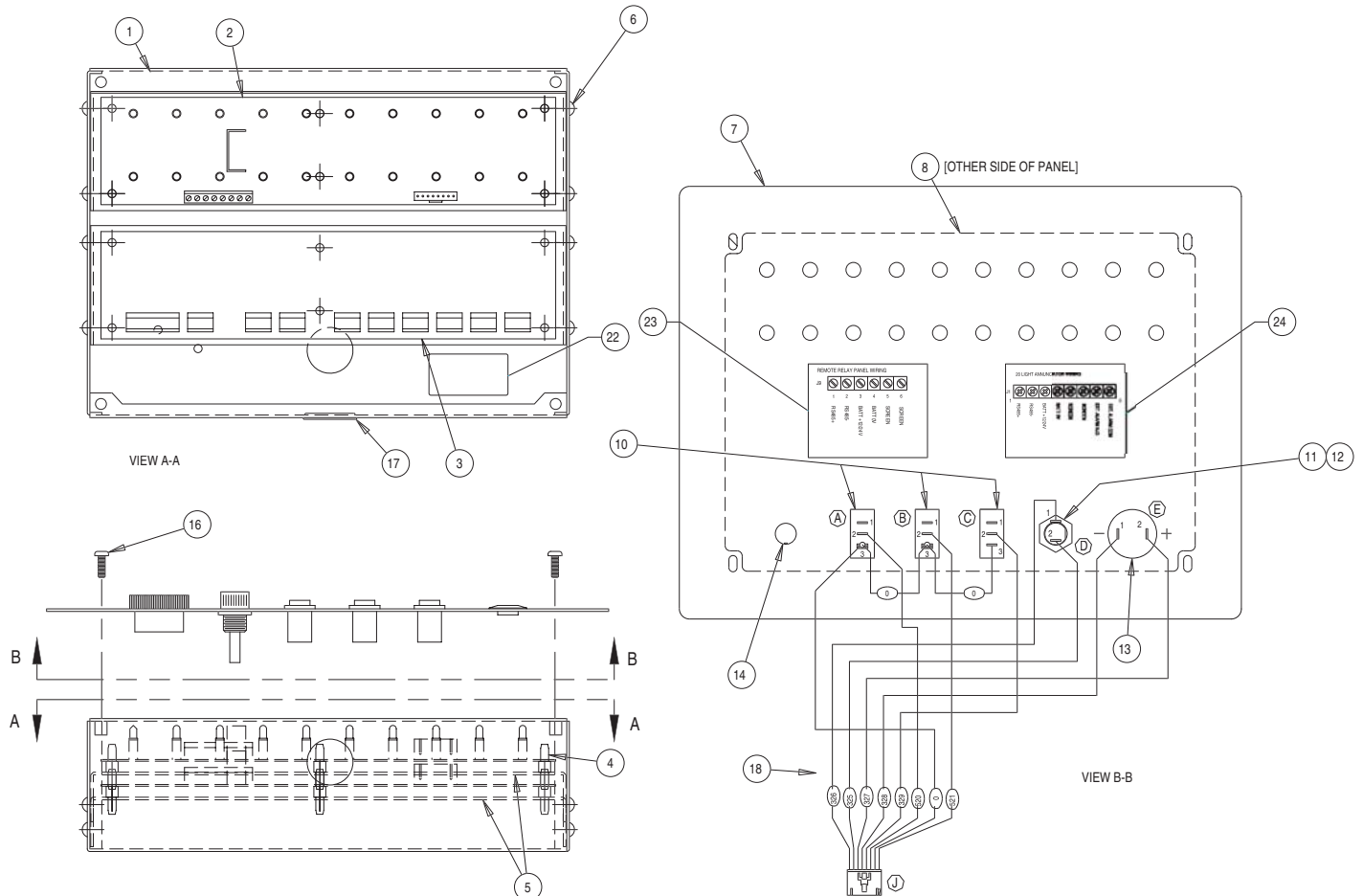
## 20 Light Remote Annunciator



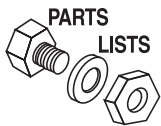
### Flush Mount Assembly – Drawing No. 0C4938-F Models 004281-0, 004281-1, 004281-2 20 Light Remote Annunciator with Remote Relay Panel

#### NOTE:

**Model 004281-0 DOES NOT work in a “D” panel application.  
Model 004281-1 & 004281-2 DOES work in a “D” panel application.**



| ITEM | PART NO. | QTY. | DESCRIPTION                       |
|------|----------|------|-----------------------------------|
| 1    | 0A7437   | 1    | PANEL ANNUNCIATOR REAR            |
| 2    | 0A6388   | 1    | ASSY PCB 20LT ANN D/E PNL         |
| 3    | 0A9036   | 1    | ASSY 8-CHAN REM RLY STAND RRP     |
| 4    | 040213   | 12   | PCB SUPPORT SNAP-IN 1/4"          |
| 5    | 0A6990   | 2    | SUPPORT, PC BOARD                 |
| 6    | 036261   | 8    | RIVET POP .125 X .275 AL          |
| 7    | 0A7438   | 1    | PANEL ANNUNCIATOR FRONT           |
| 8    | 0A6733   | 1    | DECAL 20LT ANNUN PANEL GENERAC    |
| 10   | 061284   | 3    | SWITCH ROCKER SPST 10@125V SPD    |
| 11   | 032300   | 1    | HOLDER FUSE                       |
| 12   | 044299   | 1    | FUSE 1A X AGC1                    |
| 13   | 061286   | 1    | SOUNALERT, BUZZER                 |
| 14   | 065511   | 1    | PLUG PANEL PLASTIC 1/2"           |
| 16   | 036918   | 4    | SCREW PPHM #8-32 X 1/2            |
| 17   | 025034   | 1    | PLUG STEEL 1.0625                 |
| 18   | 0E5620   | 1    | HARNESS, 10 WIRE REMOTE ANN       |
| 22   | 0D8480   | 1    | DECAL, MODEL # SOFTWARE REQUIR    |
| 23   | 0D4461   | 1    | DECAL, WIRING, REMOTE RELAY PNL   |
| 24   | 0D4462   | 1    | DECAL, WIRING, REMOTE ANNUNCIATOR |

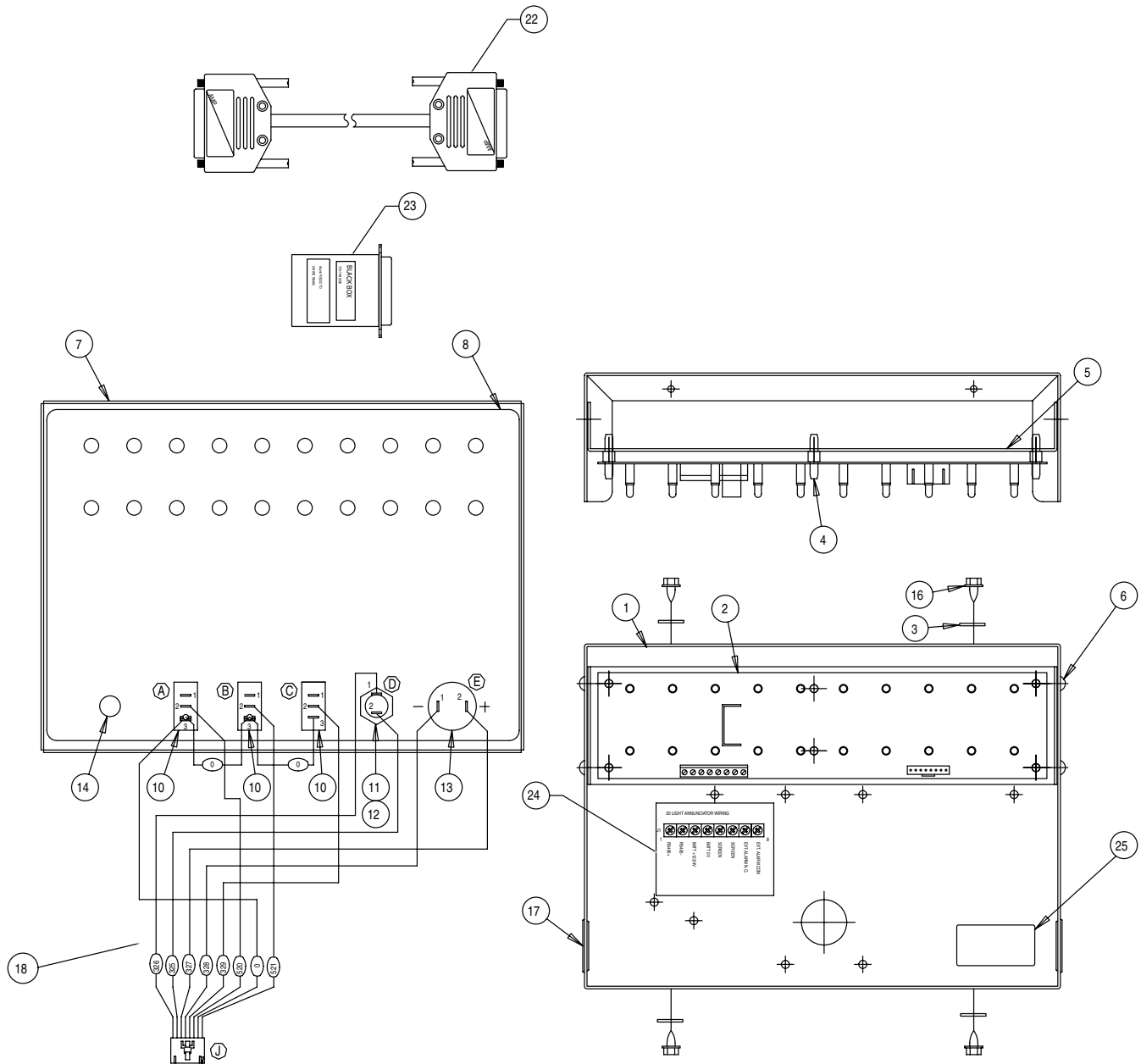


## 20 Light Remote Annunciator

Surface Mount Assembly – Drawing No. 0D1627-E  
Model 004391-0 & 004391-1

### NOTE:

This is the Time Multiplexed version to be used with the “E” Panel only.



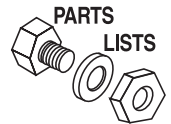
| ITEM | PART NO. | QTY. | DESCRIPTION                    |
|------|----------|------|--------------------------------|
| 1    | 0A6985   | 1    | PANEL ANNUNCIATOR REAR         |
| 2    | 0A6388A  | 1    | ASSY PCB RS485 DUAL COMM E-PNL |
| 3    | 052621   | 4    | WASHER NYLON .200              |
| 4    | 040213   | 6    | PCB SUPPORT SNAP-IN 1/4"       |
| 5    | 0A6990   | 1    | SUPPORT, PC BOARD              |
| 6    | 036261   | 4    | RIVET POP .125 X .275 AL       |
| 7    | 0A6988   | 1    | PANEL ANUNCIATR FRONT          |
| 8    | 0A6733   | 1    | DECAL 20LT ANNUN PANEL GENERAC |
| 10   | 061284   | 3    | SWITCH ROCKER SPST 10@125V SPD |
| 11   | 032300   | 1    | HOLDER FUSE                    |

| ITEM | PART NO. | QTY. | DESCRIPTION                       |
|------|----------|------|-----------------------------------|
| 12   | 044299   | 1    | FUSE 1A X AGC1                    |
| 13   | 061286   | 1    | SOUNALERT, BUZZER                 |
| 14   | 077704   | 1    | PLUG PLASTIC 0.5 FLUSH            |
| 16   | 056892   | 4    | SCREW CRIMPTITE 10-24 X 3/8       |
| 17   | 025034   | 2    | PLUG STEEL 1.0625                 |
| 18   | 0E5620   | 1    | HARNESS, 10 WIRE REMOTE ANN       |
| 22   | 0D1461   | 1    | CABLE, ASSY 20 LIGHT              |
| 23   | 0D1460   | 1    | CONVRTR RS232 TO 485              |
| 24   | 0D4462   | 1    | DECAL, WIRING, REMOTE ANNUNCIATOR |
| 25   | 0D8481   | 1    | DECAL, MODEL # SOFTWARE REQUIR    |



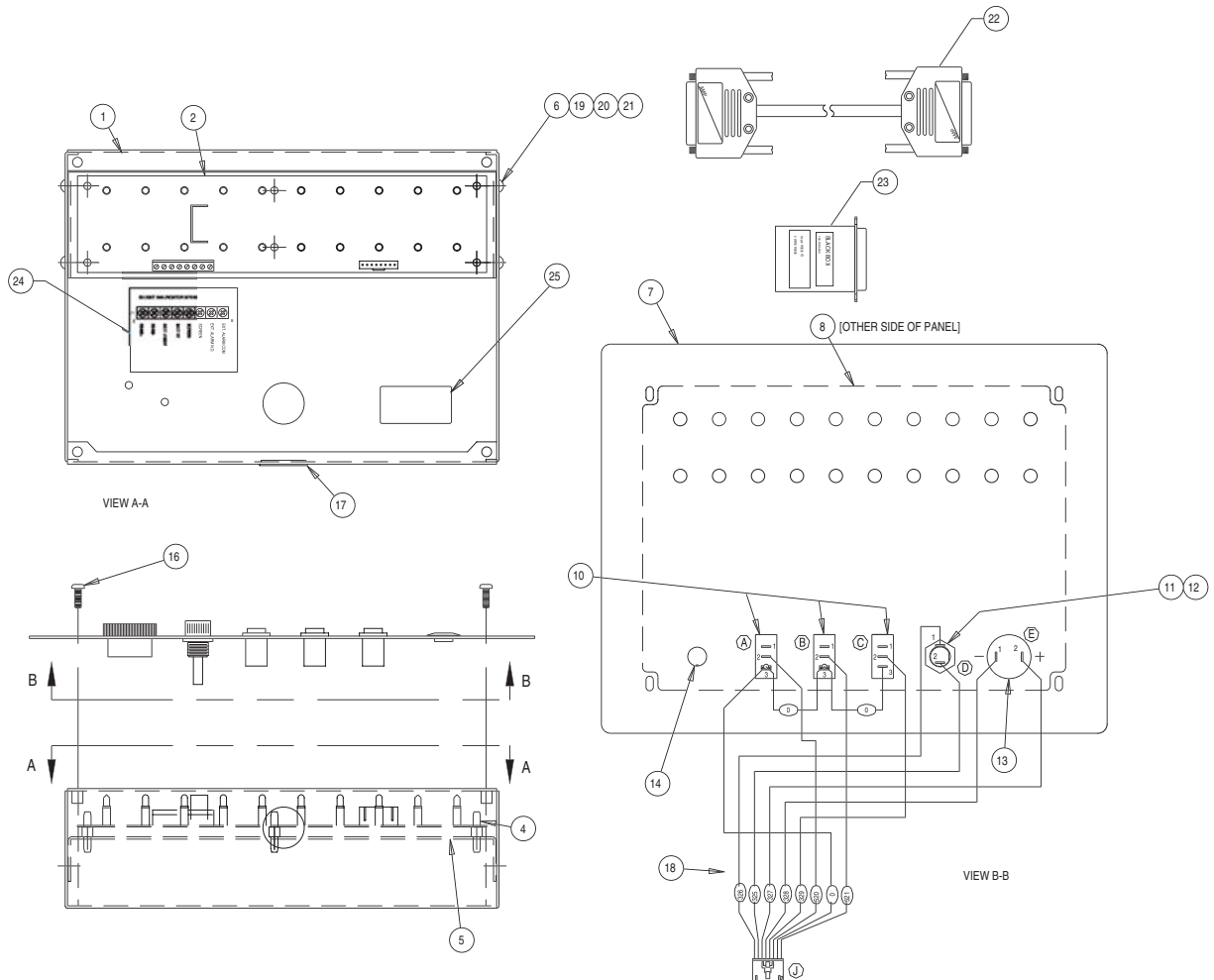
## 20 Light Remote Annunciator

Flush Mount Assembly — Drawing No. 0D1628-D  
Model 004392-0 & 004392-1



### NOTE:

This is the Time Multiplexed version to be used with the "E" Panel only.



| ITEM | PART NO. | QTY. | DESCRIPTION                       |
|------|----------|------|-----------------------------------|
| 1    | 0A7437   | 1    | PANEL ANNUNCIATOR REAR            |
| 2    | 0A6388A  | 1    | ASSY PCB RS485 DUAL COMM E-PNL    |
| 4    | 040213   | 6    | PCB SUPPORT SNAP-IN 1/4"          |
| 5    | 0A6990   | 1    | SUPPORT, PC BOARD                 |
| 6    | 036261   | 4    | RIVET POP .125 X .275 AL          |
| 7    | 0A7438   | 1    | PANEL ANUNCIATR FRONT             |
| 8    | 0A6733   | 1    | DECAL 20LT ANNUN PANEL GENERAC    |
| 9    | 074094   | 2    | LUG DIS TAB                       |
| 10   | 061284   | 3    | SWITCH ROCKER SPST 10@125V SPD    |
| 11   | 032300   | 1    | HOLDER FUSE                       |
| 12   | 044299   | 1    | FUSE 1A X AGC1                    |
| 13   | 061286   | 1    | SOUNALERT, BUZZER                 |
| 14   | 077704   | 1    | PLUG PLASTIC 0.5 FLUSH            |
| 16   | 036918   | 4    | SCREW PPHM #8-32 X 1/2            |
| 17   | 025034   | 2    | PLUG STEEL 1.0625                 |
| 18   | 0E5620   | 1    | HARNESS, 10 WIRE REMOTE ANN       |
| 22   | 0D1461   | 1    | CABLE, ASSY 20 LIGHT              |
| 23   | 0D1460   | 1    | CONVRTR, RS232 TO 485             |
| 24   | 0D4462   | 1    | DECAL, WIRING, REMOTE ANNUNCIATOR |
| 25   | 0D8482   | 1    | DECAL, MODEL # SOFTWARE REQUIR    |



## TROUBLESHOOTING GUIDE

|  |  |
|--|--|
| No LEDs are lit.   | <ol style="list-style-type: none"> <li>1. Check for proper battery supply at J1 pins 3 and 4. <ul style="list-style-type: none"> <li>• J1 pin 3 should be + Battery (12 or 24 volts).</li> <li>• J1 pin 4 should be – Battery.</li> <li>• Refer to the “power supply requirements” section at the beginning of the manual for cable specifications.</li> </ul> </li> <li>2. Check the 1 Amp panel fuse, replace if necessary.</li> </ol>   |
| The “Communication OK” LED is flashing at the rate: one sec on/one sec off | <ol style="list-style-type: none"> <li>1. Does the RS485 communications cable meet specifications. Refer to the “Communication with D/E panel” section at the beginning of the manual.</li> <li>2. Check that the RS485 connections are connected properly. <ul style="list-style-type: none"> <li>• RS485+ connected to J1 pin 1.</li> <li>• RS485– connected to J1 pin 2.</li> <li>• Shield is connected correctly. Refer to the wiring schematic for your particular model located in this manual. <b>Note the screen should be connected on one end only.</b></li> </ul> </li> <li>3. Check that the generator control panel protocol is set correctly. Refer to the generator’s control panel manual for instructions.</li> <li>4. “E” Panel application: Check the communications switch on the back of the “E” panel master control box. This switch needs to be set for RS485 communications. The “E” Panel must be “power cycled” after the switch is set. This can be done by removing/replacing the front panel fuse.</li> <li>5. Check for proper installation of the RS485 cable between the annunciator and the generator’s control panel. Is this cable sharing a conduit or running next to any high voltage or other “noisy” electrical lines?</li> </ol> |
| The “Communication OK” LED is flashing at the rate: 0.5 sec on/two sec off | <ol style="list-style-type: none"> <li>1. Does the RS485 communications cable meet specifications? Refer to the “Communication with D/E Panel” section at the beginning of the manual.</li> <li>2. Is the cable shield connected correctly? Refer to the wiring schematic for your particular model located in this manual. <b>Note that the screen should be connected on one end only.</b></li> <li>3. Check for proper installation of the RS485 cable between the annunciator and the generator’s control panel. Is this cable sharing a conduit or running next to any high voltage or other “noisy” electrical lines?</li> </ol>   |

**Generac® Power Systems, Inc.**

P.O. Box 8

Waukesha, WI 53187