

Generac C-Panel One Link Install

Parts list:

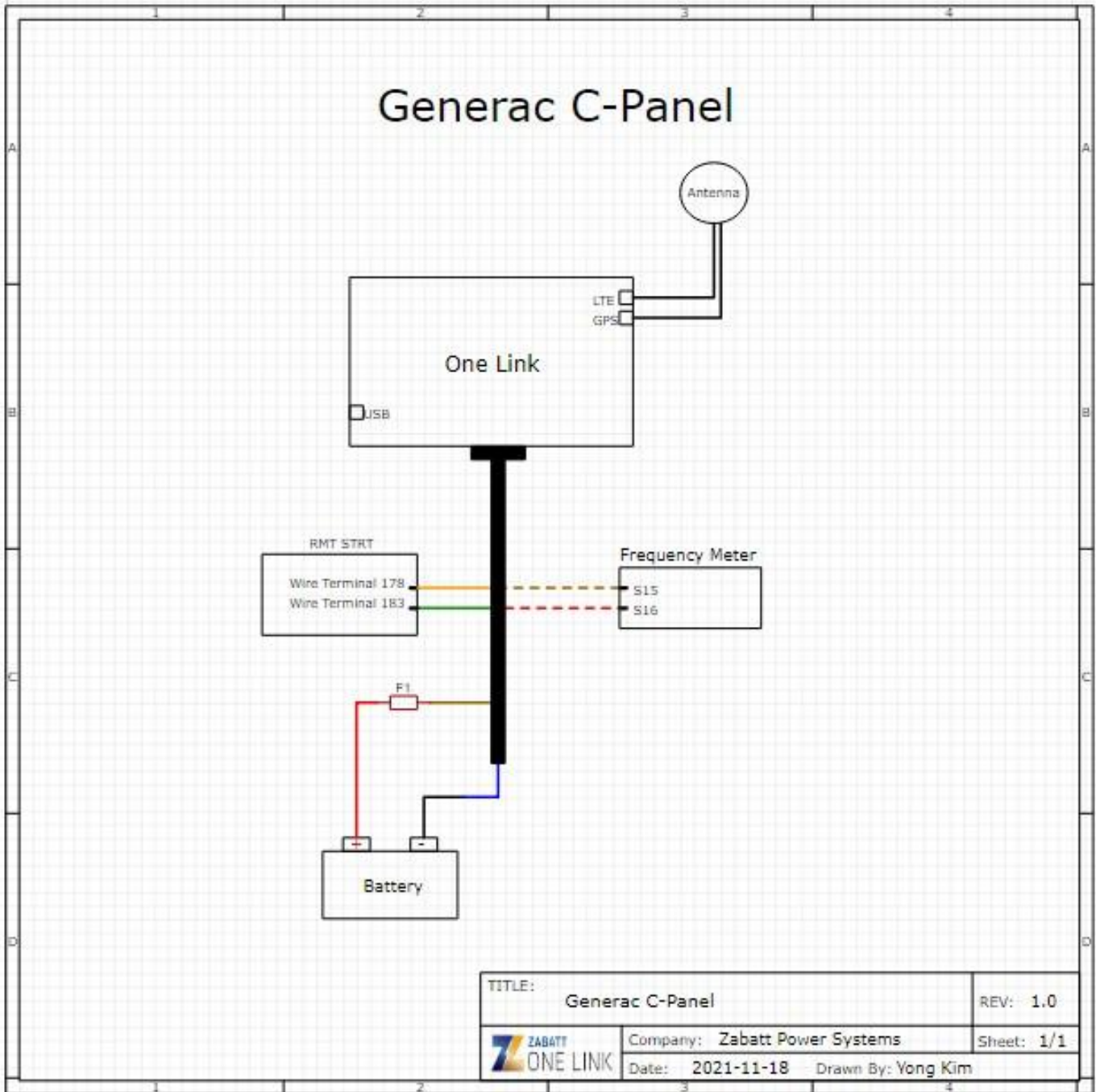
- | | |
|-----------------------------------|---|
| (1) One Link with magnetic mounts | (1) Battery wiring harness with inline fuse |
| (1) 4G LTE Antenna/GPS Antenna | (1) OLSC005 Cable |
| (2) Lever wire connectors | (2) Zip ties |

Installation Instructions:

1. Put the generator in stop mode.
2. Disconnect the positive battery terminal. **(DO NOT RECONNECT THE TERMINAL UNTIL STEP 17.)**
3. Using the magnetic mounts, mount the One Link inside of the generator enclosure close to the controller. **(Be sure the mounting location is away from weather exposure.)**
4. Connect the ring connector on the **red** wire of the battery wiring harness to the positive (+) battery terminal.
5. Connect the ring connector on the **black** wire of the battery wiring harness to the negative (-) battery terminal.
6. Route the **brown** wire and **blue** wire from the One Link I/O cable to the battery wiring harness installed in steps 4 and 5.
7. Using one of the included lever wire connectors, connect the bare **black** wire from the battery wiring harness to the bare **blue** wire from the One Link I/O cable.
8. Using one of the included lever wire connectors, connect the bare **red** wire from the battery wiring harness to the bare **brown** wire from the One Link I/O cable.
9. Route the **orange** wire from the One Link I/O cable and connect it to Wire/Terminal 178 on the generator.
10. Route the **green** wire from the One Link I/O cable and connect it to Wire/Terminal 183 on the generator.
11. Route the **brown** wire with white stripe from the One Link I/O cable and connect it to S15 (back of the hertz meter).
12. Route the **red** wire with white stripe from the One Link I/O cable and connect it to S16 (back of the hertz meter).
13. Mount the LTE/GPS antenna on top of the generator enclosure.
14. Connect the LTE antenna cable to the top connector on the right side of the One Link.
15. Connect the GPS antenna cable to the bottom connector on the right side of the One Link.

16. Plug the 15 pin connector into the bottom of the One Link, and tighten both screws using a flathead screwdriver.
17. Reconnect the positive battery terminal to the battery.

At this time the One Link will power up and begin communicating with the generator. Please allow up to 5 minutes for the One Link to establish a connection with the network and then check the activation screen or your One Link account to ensure the generator's vitals update and the One Link is transmitting data.



Generac - C-Panel V3 One Link Wire Legend				
One Link Function	Old Gray IO Cable	New Black IO Cable	Generator	
	Color	Color	Location	Generator Function
Battery +	Red	Brown	Battery +	Battery +
Battery -	Black	Blue	Battery -	Battery -
K1COM	Red/White Stripe	Orange	Wire/Terminal 178	Remote Start
K1NO	Red/Black Stripe	Green	Wire/Terminal 183	
K2COM	Orange	Yellow		
K2NC	Orange/Black Stripe	Gray		
Close to Ground	Black/White Stripe	Pink		
Close to Ground	Blue/Black Stripe	Red		
Close to Batt +	Blue/White Stripe	Black		
Close to Batt +	Blue	White		
Close to Batt +	Green/Black Stripe	Purple		
0-5V	Green	Light Green		
0-5V	Green/White Stripe	Black/White Stripe		
AC Voltage L1	White	Brown/White Stripe	S15(Back of HZ Meter)	AC Voltage Sensing(Include
AC Voltage L2	White/Black Stripe	Red/White Stripe	S16(Back of HZ Meter)	