

## EMCP11+ One Link Install

### Parts list:

- |                                   |   |
|-----------------------------------|---|
| (1) One Link with magnetic mounts | (1) Battery wiring harness with inline fuse |
| (1) 4G LTE Antenna/GPS Antenna    | (1) OLSC005 serial cable                    |
| (2) Lever wire connectors         | (2) Zip ties                                |

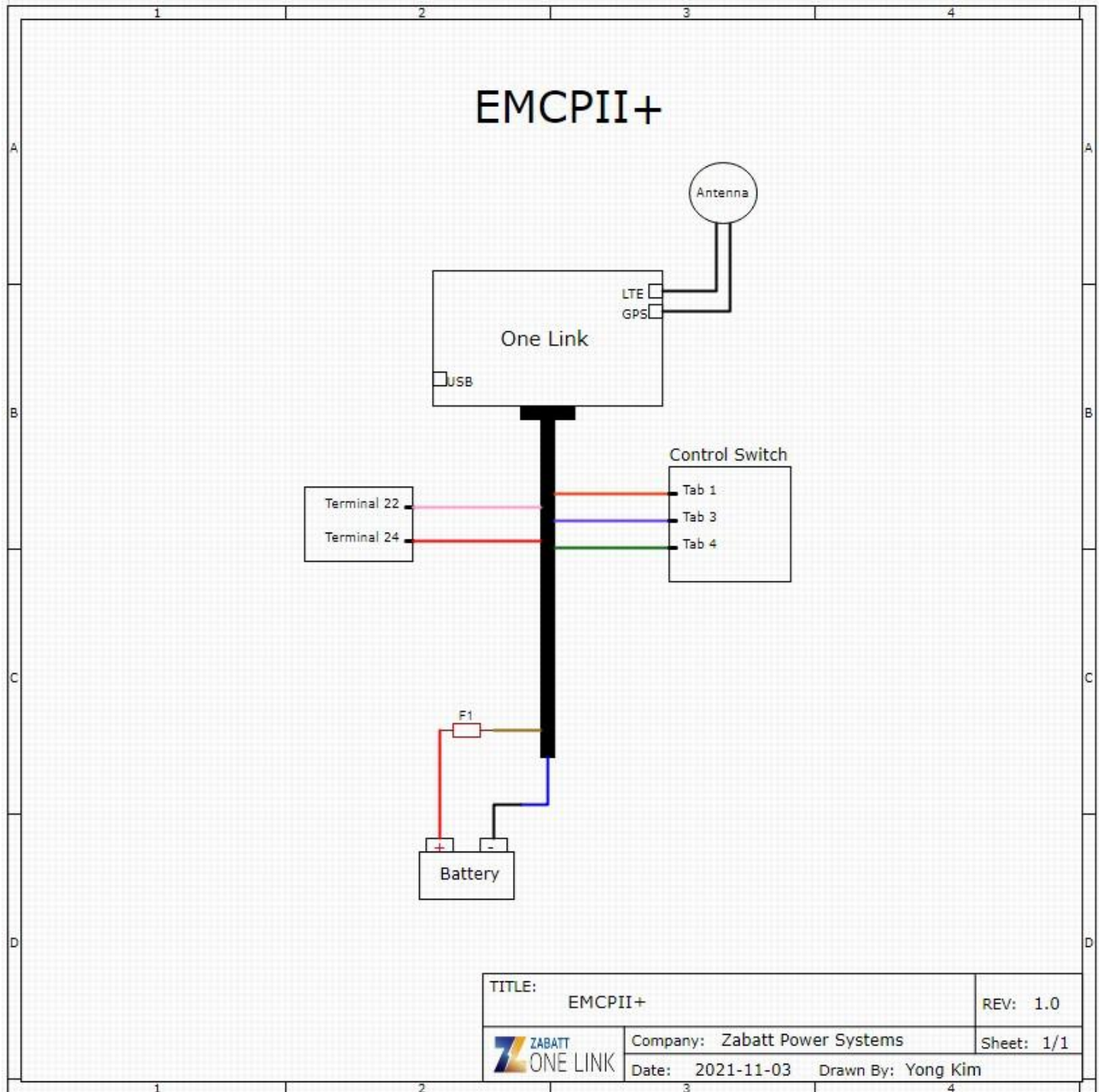
### Installation Instructions:

1. Put the generator in stop mode.
2. Disconnect the positive battery terminal. (**Do not reconnect the positive battery terminal until step 18.**)
3. Using the magnetic mounts, mount the One Link inside of the generator enclosure close to the controller. (**Be sure the mounting location is away from weather exposure.**)
4. Connect the ring connector on the **red** wire of the battery wiring harness to the positive (+) battery terminal.
5. Connect the ring connector on the **black** wire of the battery wiring harness to the negative (-) battery terminal.
6. Route the **brown** wire and **blue** wire from the One Link I/O cable to the battery wiring harness installed in steps 4 and 5.
7. Using one of the included lever wire connectors, connect the bare **black** wire from the battery wiring harness to the bare **blue** wire from the One Link I/O cable.
8. Using one of the included lever wire connectors, connect the bare **red** wire from the battery wiring harness to the bare **brown** wire from the One Link I/O cable.
9. Route the **orange** wire from the One Link I/O cable to Tab 1 on the Control Switch.
10. Route the **purple** wire from the One Link I/O cable to Tab 3 on the Control Switch.
11. Route the **green** wire from the One Link I/O cable to Tab 4 on the Control Switch.
12. Route the **pink** wire from the One Link I/O cable to Terminal 22.
13. Route the **red** wire from the One Link I/O cable to Terminal 24.
14. Mount the LTE/GPS antenna on the top of the generator.
15. Connect the LTE antenna cable to the top connector on the right side of the One Link.
16. Connect the GPS antenna cable to the bottom connector on the right side of the One Link.
17. Plug the 15 pin connector into the bottom of the One Link, and tighten both screws using a flathead screwdriver.
18. Reconnect the positive battery terminal to the battery.



4612 Highway Ave  
Jacksonville, FL 32259  
(888) 366-7886

At this time the One Link will power up and begin communicating with the generator. Please allow 5-10 minutes for the One Link to establish a connection to the internet, and then check the activation screen or your One Link account to ensure the generator's vitals update and the One Link is transmitting data.



EMCPII+ Wiring One Link V3					
One Link		Old Gray I/O Cable	New Black I/O Cable	Generator	
Description	One Link Function	Color	Color	Location	Generator Function
Battery +	Battery +	Red	Brown	Battery +	Battery +
Battery -	Battery -	Black	Blue	Battery -	Battery -
K1COM	K1COM	Red (White Stripe)	Orange	Tab 1	Control Switch
K1NO	K1NO	Red (Black Stripe)	Green	Tab 4	
K2COM	K2COM	Orange	Yellow		
K2NC	K2NC	Orange (Black Stripe)	Gray		
DI1	Close to Ground	Black (White Stripe)	Pink	Terminal 22	
DI2	Close to Ground	Blue (Black Stripe)	Red	Terminal 24	
DI3	Close to Batt +	Blue (White Stripe)	Black		
DI4	Close to Batt +	Blue	White		
DI5	Close to Batt +	Green (Black Stripe)	Purple	Tab 3	Control Switch
A1	0-5V	Green	Light Green		
A2	0-5V	Green (White Stripe)	Black/White Stripe		
L1	AC Voltage L1	White	Brown/White Stripe		
L2	AC Voltage L2	White (Black Stripe)	Red/White Stripe		